



Versatile and flexible mounting solutions

FASTENING TECHNOLOGY



With our assembly systems and brackets, you can adapt the sensors and equipment to your particular task.

Simple to install and adjust, these provide – in addition to attachment – exact positioning, even under difficult conditions. Balluff mounting solutions are distinguished by high-quality materials and exact processing.

The most important benefits

- Flexible and versatile
- Compatible and universal
- Excellent price/performance ratio

Sensors

RFID

Machine Vision and Optical Identification

Human Machine Interfaces

Systems

Safety

Industrial Networking

Power Supplies

Connectivity

Accessories



	SET011L BAV BP-PH-00064-01	SET011M BAV BP-PH-00065-01	BAM033K BMS AD-M-004-X19/MIS-D
Principle of operation	Mounting system	Mounting system	Mounting system
Use	For mounting system BMS	For mounting system BMS	For monitor holder BMS, for quick-change plate BVS
Material	Aluminum Plastic	Aluminum anodized Die-cast zinc	Naturally anodized alu- minum
Dimension	150 x 150 mm	150 x 150 mm	6 x 116 x 116 mm
Mounting	Screws, terminals	Screws, terminals	Screws
Additional features	—	—	—
Productview	Page 408	Page 408	Page 408



	BAM002J BMS CU-P-D12-A040-00	BAM034K BMS CUJ-M-D30-E057-00	BAM034L BMS CUJ-M-D30-E060-01
Principle of operation	Mounting system	Mounting system	Mounting system
Use	For holding rods with Ø12 mm, for holding rods with 10x10 mm	For mounting system BMS, for monitor holder BMS	For mounting system BMS, for monitor holder BMS
Material	POM	Aluminum	Aluminum
Dimension	56 x 30 x 40 mm	75 x 75 x 108 mm	40 x 74 x 108 mm
Mounting	Screws, terminals	Screws, Clamps	Screws, Clamps
Additional features	—	—	—
Productview	Page 409	Page 409	Page 409



	BAM024R BMS CCJ-M-D12-B-01	BAM024P BMS CU-M-D12-B028-00	BAM0275 BMS CU-M-D12-B040-00	BAM02JT BMS CU-M-D12-B040-02	BAM033U BMS CU-M-D30-E040-00
Principle of operation	Mounting system	Mounting system	Mounting system	Mounting system	Mounting system
Use	For mounting system BMS, for holding rods with Ø12 mm	For mounting system BMS, for holding rods with Ø12 mm	For mounting system BMS, for holding rods with Ø12 mm	For mounting system BMS, for holding rods with Ø12 mm	For holding rods with Ø30 mm, for mounting system BMS
Material	Chrome plated zinc, matte	Chrome plated zinc, matte	Chrome plated zinc, matte	Chrome plated zinc, matte	Cast aluminum
Dimension	45.5 x 36 x 30 mm	64 x 30 x 36 mm	60 x 30 x 36 mm	60 x 30 x 42.8 mm	60 x 50 x 60 mm
Mounting	Screws, terminals	Screws, terminals	Screws, terminals	Screws, terminals	Screws, terminals
Additional features	—	—	—	—	—
Productview	Page 408	Page 408	Page 408	Page 408	Page 408



	BAM002Y BMS CUJ-P-D12-R040-00	BAM0044 BMS CU-M-D12-I060-01	BAM01CH BMS CU-M-D12-I060-02	BAM032T BAM IA-XA-031-200-R	BAM0031 BMS CS-M-D12-IZ
Principle of operation	Mounting system	Mounting system	Mounting system	Cable ties	Mounting system
Use	For mounting system BMS, for holding rods with Ø12 mm	For mounting system BMS	For mounting system BMS	For cable fastener	For mounting system BMS, for holding rods with Ø12 mm
Material	PA	Stainless steel (1.4301)	Stainless steel (1.4301)	PP	Zinc
Dimension	50 x 65 x 35 mm	76.4 x 10 x 30 mm	76.4 x 10 x 30 mm	21 x 1.5 x 200 mm	Ø 27 x 37 mm
Mounting	Screws, terminals	Screws, terminals	Screws, terminals	—	Screws, terminals
Additional features	—	—	—	—	—
Productview	Page 409	Page 409	Page 409	Page 409	Page 409



	BAM003Y BMS CS-M-D12-IZ-01	BAM035N BMS CS-M-D12-IZ-02	BAM01Z7 BMS CS-M-D14-IZ	
Principle of operation	Mounting system	Mounting system	Mounting system	
Use	For mounting system BMS, for holding rods with Ø12 mm	For mounting system BMS, for holding rods with Ø12 mm	For mounting system BMS, for holding rods with Ø14 mm	
Material	Stainless steel (1.4301)	Die-cast zinc chrome plated, matte	Zinc	
Dimension	Ø 27 x 37 mm	Ø 27 x 39.1 mm	Ø 27 x 37 mm	
Mounting	Screws, terminals	Clamps	Screws, terminals	
Additional features	—	—	—	
Productview	Page 409	Page 410	Page 410	



	BAM033Y BMS CC-M-D30-E-01	BAM003U BMS CC-P-D10-A-00	BAM002M BMS CC-P-D12-A-00	
Principle of operation	Mounting system	Mounting system	Mounting system	
Use	For holding rods with Ø30 mm, for holding rods with Ø12 mm, for mounting system BMS	For holding rods with Ø10 mm, for holding rods with 8x8 mm, for mounting system BMS	For holding rods with Ø12 mm, for holding rods with 10x10 mm, for mounting system BMS	
Material	Cast aluminum	POM	POM	
Dimension	40 x 84 mm	55 x 22 x 22 mm	55 x 22 x 22 mm	
Mounting	Screws, terminals	Screws, terminals	Screws, terminals	
Additional features	—	—	—	
Productview	Page 410	Page 410	Page 411	



	BAM01Z8 BMS CS-M-D14-IZ-01	BAM035A BMS CS-M-D30-BZ-03	BAM002Z BMS CC-M-D12-B-00	BAM035P BMS CC-M-D12-B-03	BAM033W BMS CC-M-D30-E-00
Principle of operation	Mounting system	Mounting system	Mounting system	Mounting system	Mounting system
Use	For mounting system BMS, for holding rods with Ø14 mm	For mounting system BMS, for holding rods with Ø30 mm	For mounting system BMS, for holding rods with Ø12 mm	For mounting system BMS, for holding rods with Ø12 mm	For holding rods with Ø30 mm, for mounting system BMS
Material	Stainless steel (1.4301)	Cast aluminum	Aluminum anodized	Die-cast zinc chrome plated, matte	Cast aluminum
Dimension	Ø 27 x 37 mm	Ø 30 x 59 mm	55 x 20 x 20 mm	55 x 20 x 20 mm	40 x 98 mm
Mounting	Screws, terminals	Screws, terminals	Screws, terminals	Clamps	Screws, terminals
Additional features	—	—	—	—	—
Productview	Page 410	Page 410	Page 410	Page 410	Page 410



	BAM01CW BMS CS-M-D12-BX08-07	BAM0343 BMS CSJ-M-D30-EX19-02	BAM003T BMS CASE-01	BAM003W BMS KIT-V1	BAM021Y BMS RS-M-D12-0100-00
Principle of operation	Mounting system	Mounting system	Mounting kit empty	Mounting kit equipped	Mounting system
Use	For holding rods with Ø12 mm, for slot sensor BGL, for photoelectric sensors BOS 2K, for photoelectric sensors BOS 6K	For mounting system BMS, for connection plate VESA 75/100	For mounting system BMS	For mounting system BMS	For mounting system BMS
Material	Aluminum anodized	PA 6.6 GF30	Aluminum	Aluminum Die-cast zinc Stainless steel Plastic	Aluminum anodized
Dimension	37 x 20 x 30 mm	Ø 60 x 190.5 mm	390 x 135 x 510 mm	390 x 135 x 510 mm	Ø 12 x 100 mm
Mounting	Screws, terminals	Screws, terminals	—	—	Clamps
Additional features	—	max. load capacity 10 Kg (static), Latches in 15° increments, 60° free swivel range	—	—	—
Productview	Page 411	Page 411			Page 411



	BAM002R BMS RS-M-D12-0150-00	BAM021T BMS RS-M-D12-0200-00	BAM002T BMS RS-M-D12-0250-00	
Principle of operation	Mounting system	Mounting system	Mounting system	
Use	For mounting system BMS	For mounting system BMS	For mounting system BMS	
Material	Aluminum anodized	Aluminum anodized	Aluminum anodized	
Dimension	Ø 12 x 150 mm	Ø 12 x 200 mm	Ø 12 x 250 mm	
Mounting	Clamps	Clamps	Clamps	
Additional features	–	–	–	
Productview	Page 411	Page 411	Page 411	



	BAM0341 BMS RS-M-D30-1000-01	BAM0045 BMS RS-S-D12-0150-00	BAM0046 BMS RS-S-D12-0300-00	
Principle of operation	Mounting system	Mounting system	Mounting system	
Use	For mounting system BMS	For mounting system BMS	For mounting system BMS	
Material	Aluminum anodized	Stainless steel (1.4571)	Stainless steel (1.4571)	
Dimension	Ø 30 x 1000 mm	Ø 12 x 150 mm	Ø 12 x 300 mm	
Mounting	Clamps	Clamps	Clamps	
Additional features	–	–	–	
Productview	Page 411	Page 412	Page 412	



	BAM021W BMS RS-M-D12-0300-00	BAM021U BMS RS-M-D12-0750-00	BAM002U BMS RS-M-D12-1000-00	BAM033Z BMS RS-M-D30-0300-01	BAM0340 BMS RS-M-D30-0500-01
Principle of operation	Mounting system	Mounting system	Mounting system	Mounting system	Mounting system
Use	For mounting system BMS	For mounting system BMS	For mounting system BMS	For mounting system BMS	For mounting system BMS
Material	Aluminum anodized	Aluminum anodized	Aluminum anodized	Aluminum anodized	Aluminum anodized
Dimension	Ø 12 x 300 mm	Ø 12 x 750 mm	Ø 12 x 1000 mm	Ø 30 x 300 mm	Ø 30 x 500 mm
Mounting	Clamps	Clamps	Clamps	Clamps	Clamps
Additional features	–	–	–	–	–
Productview	Page 411	Page 411	Page 411	Page 411	Page 411



	BAM003J BMS AD-M-003-D12/I/Z	BAM0041 BMS CZ-M-D12-I-001	BAM003A BMS BS-M-D12-0250-01	BAM033T BMS BS-M-D12-0250-05	BAM0035 BMS CR-M-D12-IS-03
Principle of operation	Mounting system	Beam deflector	Mounting system	Mounting system	Mounting system
Use	For mounting system BMS	For cleaning of sensors and reflectors	For BOS R-14 reflectors, for reflectors BOS R-1/R-9, for reflectors BOS R-22/R-26	For reflectors -025-S023..., for reflectors -026-S012..., for reflectors -027-S004..., for photoelectric sensors BOS 6K	For BOS R-11 reflectors
Material	Aluminum anodized	Aluminum anodized Plastic	Aluminum anodized	Aluminum anodized	Stainless steel
Dimension	Ø 30 x 10 mm	190 x 30 mm	Ø 12 x 250 mm	Ø 12 x 250 mm	93 x 34.5 x 85 mm
Mounting	Clamps	Clamps	Clamps	Screws, terminals	Clamps
Additional features	–	–	–	–	–
Productview	Page 412	Page 412	Page 412	Page 412	Page 412



	BAM0042 BMS CR-M-D12-IS-04	BAM0034 BMS CR-M-D12-IU-02	BAM003N BMS CR-M-D12-IU-05	
Principle of operation	Mounting system	Mounting system	Mounting system	
Use	For photoelectric sensors BOS 21M, for BOS R-9 reflectors	For BOS R-1 reflectors, for BOS R-2 reflectors, for BOS R-3 reflectors	For BOS R-1 reflectors	
Material	Stainless steel	Stainless steel	Stainless steel	
Dimension	61.5 x 34 x 59 mm	Ø 33 x 39 mm	Ø 84 x 92.5 mm	
Mounting	Clamps	Clamps	Clamps	
Additional features	—	—	—	
Productview	Page 412	Page 412	Page 413	



	BAM002L BMS CR-P-D12-AU-00	BAM0278 BAM MB-XA-019-B11-4	BAM0039 BMS BS-M-D12-0250-02	BAM003F BMS BS-M-D12-0250-03	BAM003H BMS BS-M-D12-0400-04
Principle of operation	Mounting system	Mounting system	Mounting system	Mounting system	Mounting system
Use	For holding rods with Ø12 mm, for holding rods with 10x10 mm, for all reflectors with Ø20mm	For line light BAE	For photoelectric sensors BOS Q08M, for inductive sensors BES, for photoelectric sensors BOS 2K, for photoelectric sensors BOS 5K, for photoelectric sensors BOS 6K	For photoelectric Fork sensors BGL 5A, for photoelectric Fork sensors BGL 10A, for photoelectric Fork sensors BGL 20A, for photoelectric Fork sensors BGL 30A, for photoelectric Fork sensors BGL 50A	For photoelectric Fork sensors BGL 80A/120A, for photoelectric Fork sensors BGL 180A/220A
Material	POM	Stainless steel	Aluminum anodized	Aluminum anodized	Aluminum anodized
Dimension	60 x 30 x 30 mm	176 x 3 x 15 mm	Ø 12 x 250 mm	Ø 12 x 250 mm	Ø 12 x 400 mm
Mounting	Screws	Screws	Clamps	Screws, terminals	Clamps
Additional features	—	—	—	—	—
Productview	Page 413	Page 413	Page 413	Page 413	Page 413



	BAM0043 BMS CS-M-D12-B21K-04	BAM01AW BMS CS-M-D12-B23K-05	BAM003C BMS CS-M-D12-BX05-02	
Principle of operation	Mounting system	Mounting system	Mounting system	
Use	For photoelectric sensors BOS 21M	For photoelectric sensors BOS 23K, for photoelectric sensors BOS 26K	For photoelectric sensors BOS 21M, for photoelectric sensors BOS 23K, for photoelectric sensors BOS 25K, for photoelectric sensors BOS 26K, for photoelectric sensors BOS 50K, for photoelectric sensors BOS 64K, for photoelectric sensors BOD 63M, for photoelectric sensors BOD 66M, for BOS R-9 reflectors, for BOS R-22 reflectors, for BOS R-34 reflectors, for BOS R-36 reflectors, for BOS R-44 reflectors, for BOS R-46 reflectors	
Material	Zinc nickel plated	Stainless steel	Aluminum anodized	
Dimension	88 x 20 x 56 mm	93 x 30 x 55 mm	120 x 5 x 60 mm	
Mounting	Clamps	Clamps	Screws, terminals	
Additional features	—	—	—	
Productview	Page 413	Page 413	Page 414	



	BAM0040 BMS CS-M-D12-BX06-03	BAM01AY BMS CS-M-D12-BX07-06	BAM01F3 BMS CS-M-D12-BX10-08	BAM01F2 BMS CS-M-D12-BX11-09	BAM0277 BMS CS-M-D12-BX17-11
Principle of operation	Mounting system	Mounting system	Mounting system	Mounting system	Mounting system
Use	For photoelectric sensors BOS 2K, for photoelectric sensors BOS 5K, for photoelectric sensors BOS 6K	Mounting bracket For BIS M-400x, for photoelectric sensors BOS 50K, for BOS R-11 reflectors	For angle sensors BWL, for slot sensor BGL	For line light BVS, for background lights BVS, for angle sensors BWL D	For line light BVS
Material	Stainless steel	Stainless steel (1.4571)	Stainless steel	Stainless steel	Stainless steel
Dimension	79 x 23 x 28 mm	93 x 34.5 x 85 mm	61 x 34 x 36 mm	185 x 21 x 34 mm	75 x 3 x 44 mm
Mounting	Screws, terminals	Screws, terminals	Screws, terminals	Screws, terminals	Screws
Additional features	—	—	—	—	—
Productview	Page 414	Page 414	Page 414	Page 414	Page 414



	BAM024T BMS CS-M-D12-BZ	BAM0036 BMS CS-M-D12-ID08-01	BAM0037 BMS CS-M-D12-ID12-01	
Principle of operation	Mounting system	Mounting system	Mounting system	
Use	For mounting system BMS, for holding rods with Ø12 mm	For M08 sensors	For M12 sensors	
Material	Chrome plated zinc, matte	Stainless steel	Stainless steel	
Dimension	45.5 x 24 x 30 mm	Ø 28 x 34 mm	Ø 28 x 34 mm	
Mounting	Screws, terminals	Clamps	Clamps	
Additional features	–	–	–	
Productview	Page 414	Page 414	Page 415	



	BAM003P BMS CS-M-D12-IQ40-02	BAM003R BMS CS-M-D12-IQ40-03	BAM01J2 BMS CS-M-D12-IX09-01	
Principle of operation	Mounting system	Mounting system	Mounting system	
Use	For capacitive sensors BCS Q40, for inductive sensors BES Q40, for inductive couplers BIC Q40	For capacitive sensors BCS Q40, for inductive sensors BES Q40, for inductive couplers BIC Q40	For M36 sensors	
Material	Stainless steel	Stainless steel	Stainless steel	
Dimension	102 x 40 x 60 mm	121 x 3 x 60 mm	Ø 48 x 54 mm	
Mounting	Screws, terminals	Screws, terminals	Clamps	
Additional features	–	–	–	
Productview	Page 415	Page 415	Page 416	

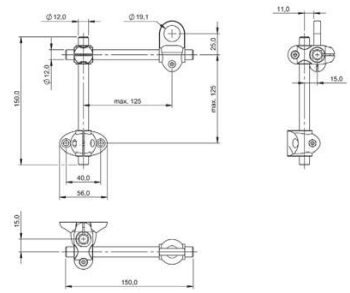


	BAM003K BMS CS-M-D12-ID16-01	BAM0032 BMS CS-M-D12-ID18-01	BAM003L BMS CS-M-D12-ID24-01	BAM0033 BMS CS-M-D12-ID30-01	BAM003M BMS CS-M-D12-ID36-01
Principle of operation	Mounting system	Mounting system	Mounting system	Mounting system	Mounting system
Use	For M16 sensors	For M18 sensors	For M24 sensors	For M30 sensors	For M36 sensors
Material	Stainless steel	Stainless steel	Stainless steel	Stainless steel	Stainless steel
Dimension	Ø 33 x 36.5 mm	Ø 28 x 34 mm	Ø 35 x 41.5 mm	Ø 42 x 47 mm	Ø 48 x 54 mm
Mounting	Clamps	Clamps	Clamps	Clamps	Clamps
Additional features	–	–	–	–	–
Productview	Page 415	Page 415	Page 415	Page 415	Page 415

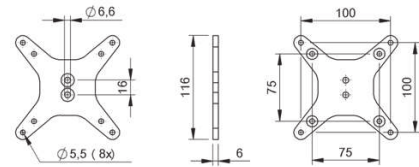


	BAM01UL BMS CS-M-D12-IX14-01	BAM002K BMS CS-P-D12-AD08-00	BAM002N BMS CS-P-D12-AD12-00	BAM002P BMS CS-P-D12-AD18-00	
Principle of operation	Mounting system	Mounting system	Mounting system	Mounting system	
Use	For capacitive sensors BCS Q40, for inductive sensors BES Q40	For sensors Ø8 mm, for M08 sensors, for holding rods with Ø12 mm, for holding rods with 10x10 mm	For sensors Ø12 mm, for M12 sensors, for holding rods with Ø12 mm, for holding rods with 10x10 mm	For sensors Ø18 mm, for M18 sensors, for holding rods with Ø12 mm, for holding rods with 10x10 mm	
Material	Stainless steel	POM	POM	POM	
Dimension	39 x 16 x 34 mm	60 x 30 x 30 mm	60 x 30 x 30 mm	60 x 30 x 30 mm	
Mounting	Clamps	Clamps	Clamps	Clamps	
Additional features	–	–	–	–	
Productview	Page 416	Page 416	Page 416	Page 416	

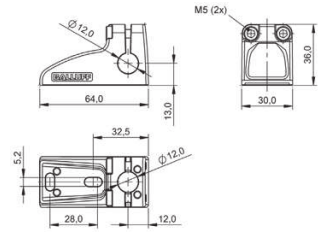
408 | Accessories | Fastening Technology



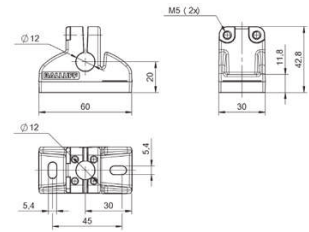
SET011L



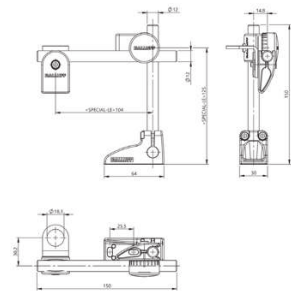
BAM033K



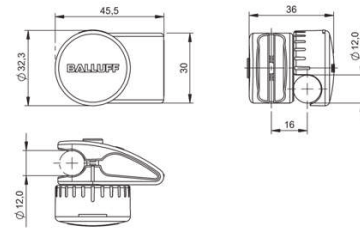
BAM024P



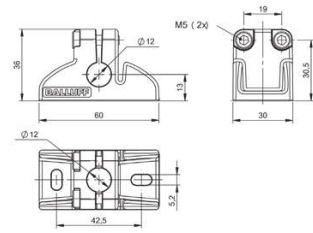
BAM02JT



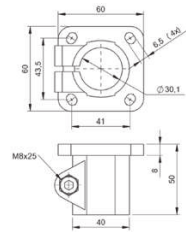
SET011M



BAM024R

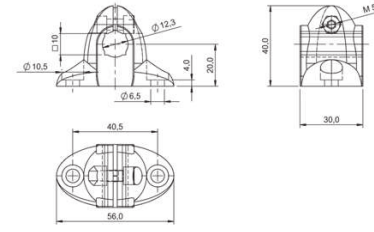


BAM027S

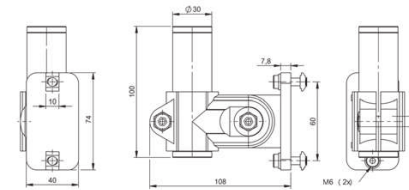


BAM033U

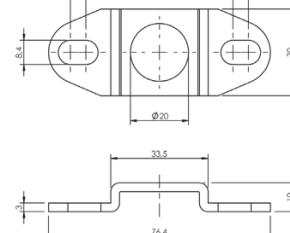
Flexible mounting system | 409



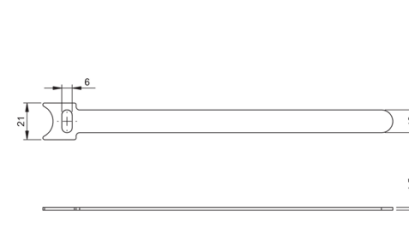
BAM002J



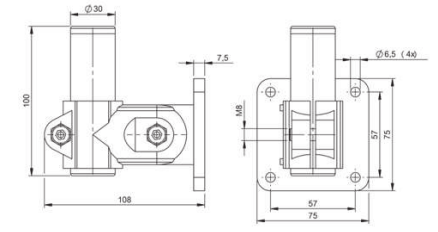
BAM034L



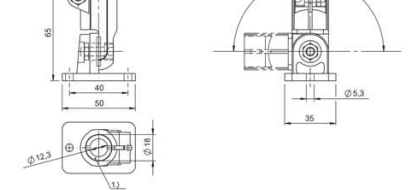
BAM0044



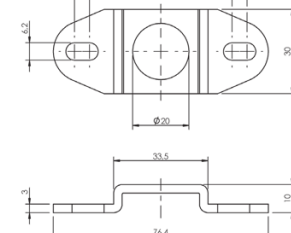
BAM032T



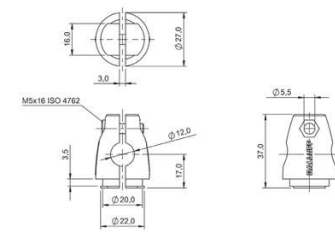
BAM002Y



BAM0031, BAM003Y



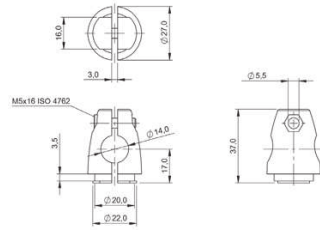
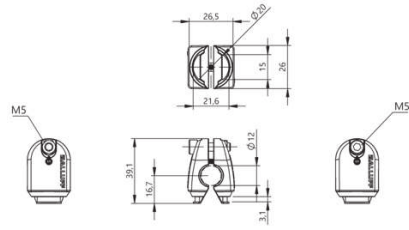
BAM01CH



BAM0002Y

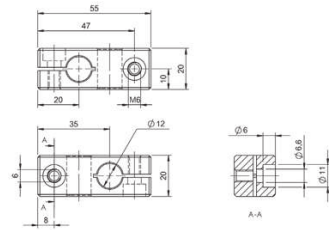
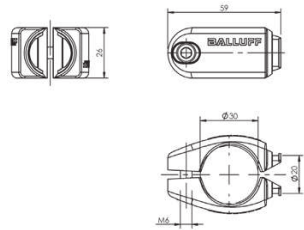
1) Reduzierhülse

410 | Accessories | Fastening Technology



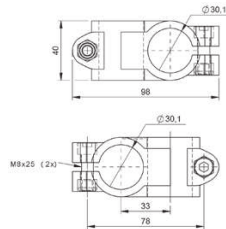
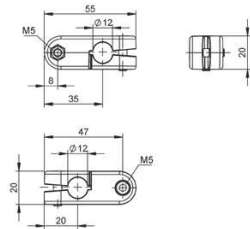
BAM035H

BAM0127, BAM0128



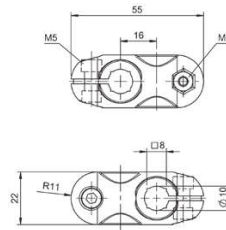
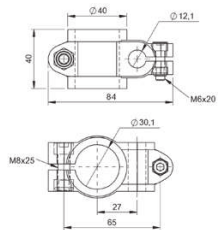
BAM035A

BAM002Z



BAM035P

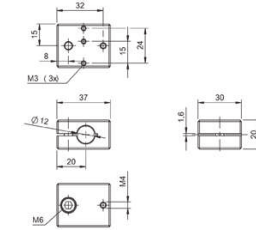
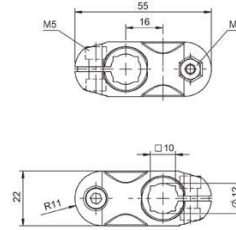
BAM033W



BAM033Y

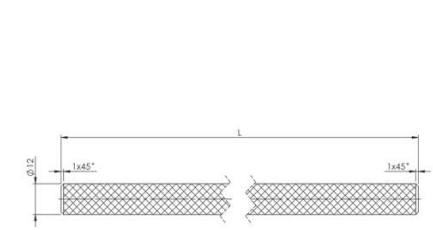
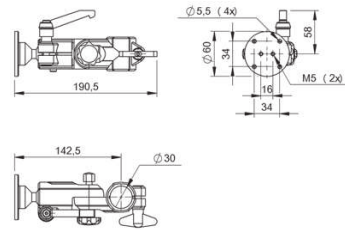
BAM003U

Flexible mounting system | 411



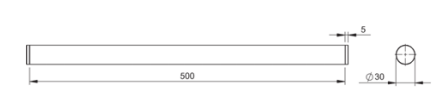
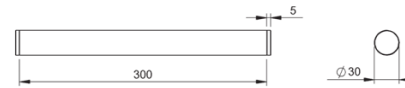
BAM002M

BAM01CW



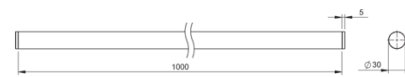
BAM0343

BAM021Y, BAM002R, BAM021T, BAM002T, BAM021W, BAM021U, BAM002U

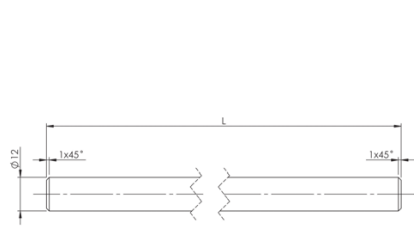


BAM0332

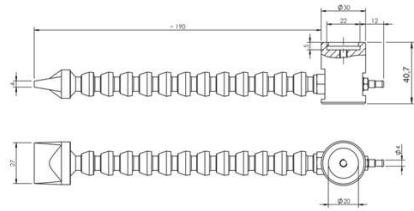
BAM0340



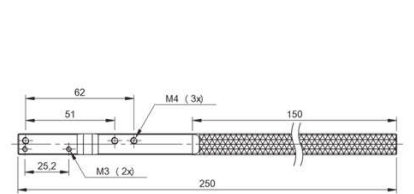
BAM0341



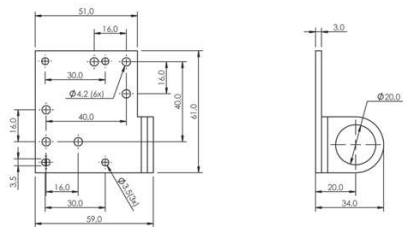
BAM0045, BAM0046



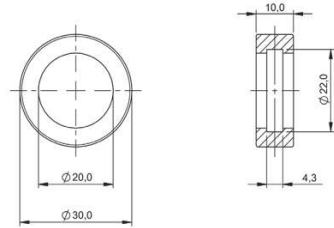
BAM0041



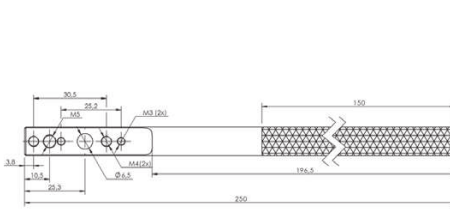
BAM0037



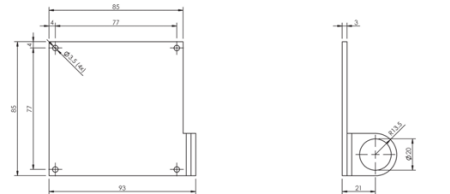
BAM0042



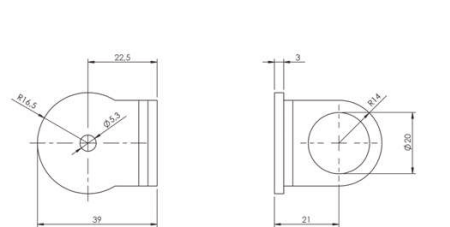
BAM003J



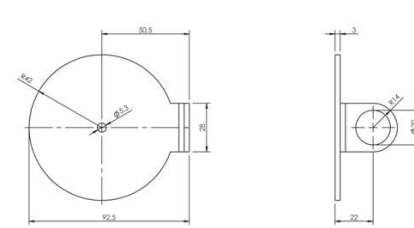
BAM003A



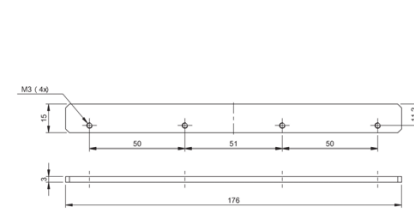
BAM0035



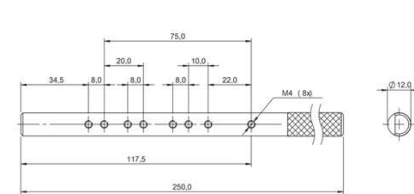
BAM0034



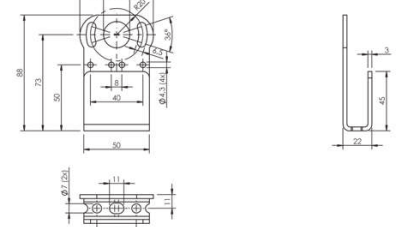
BAM003N



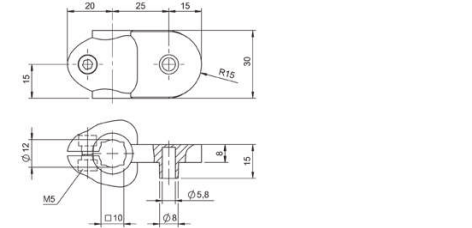
BAM0278



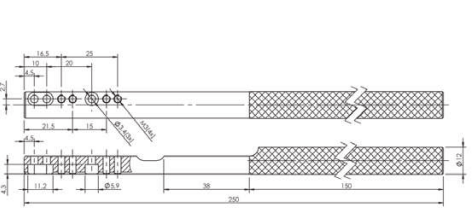
BAM003F



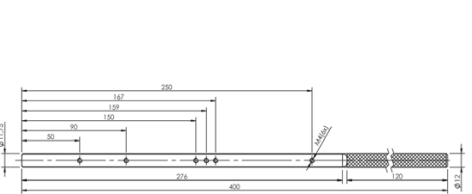
BAM0043



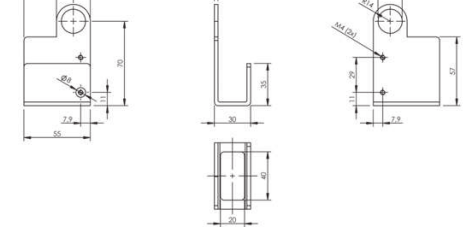
BAM002L



BAM0039

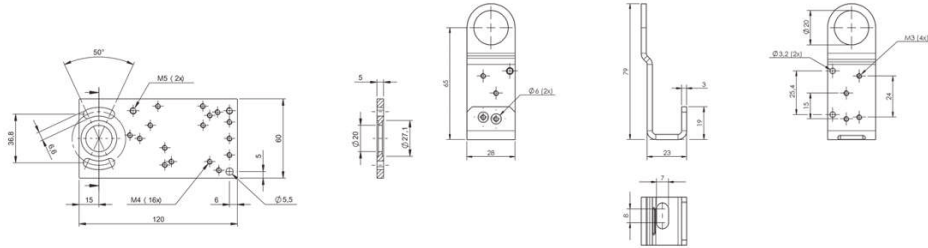


BAM003H



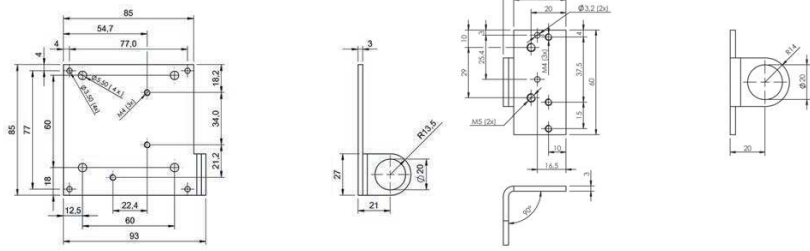
BAM01AW

414 | Accessories | Fastening Technology



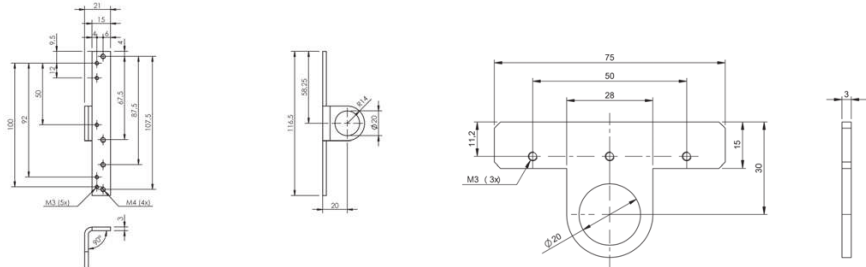
BAM003C

BAM0040



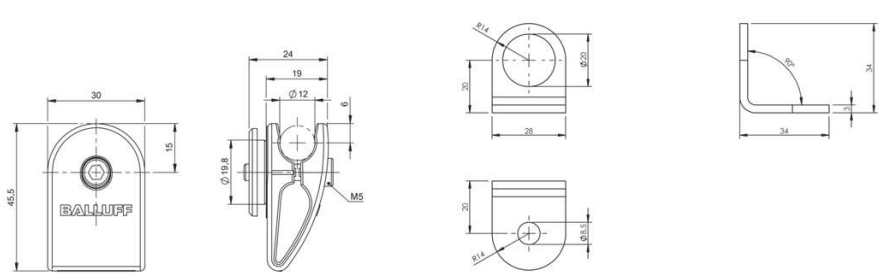
BAM01AY

BAM01F3



BAM01F2

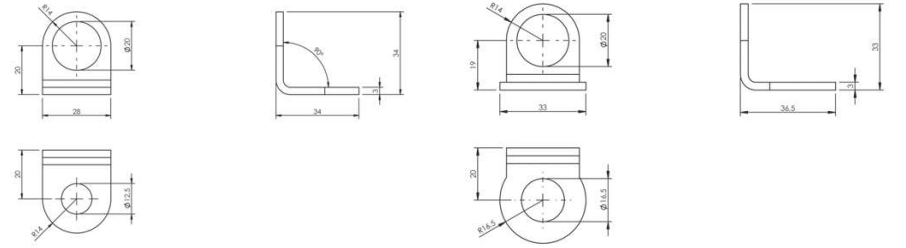
BAM0277



BAM024T

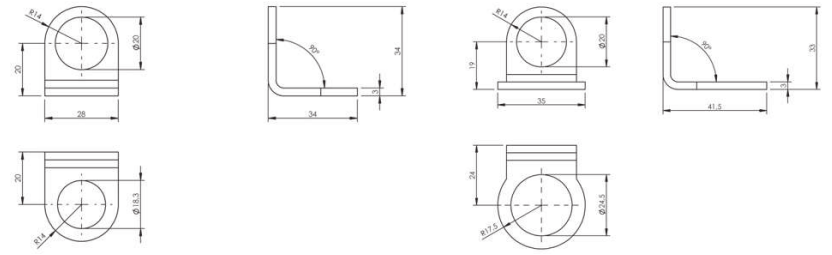
BAM0036

Flexible mounting system | 415



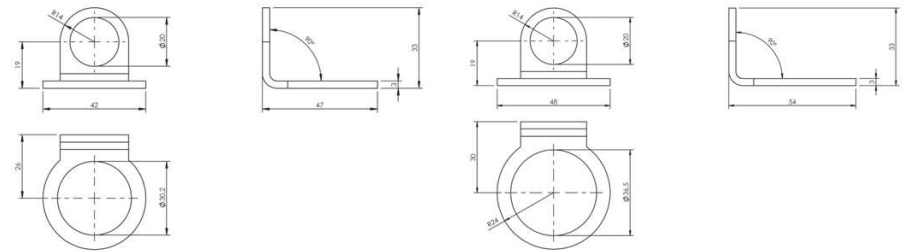
BAM0037

BAM003K



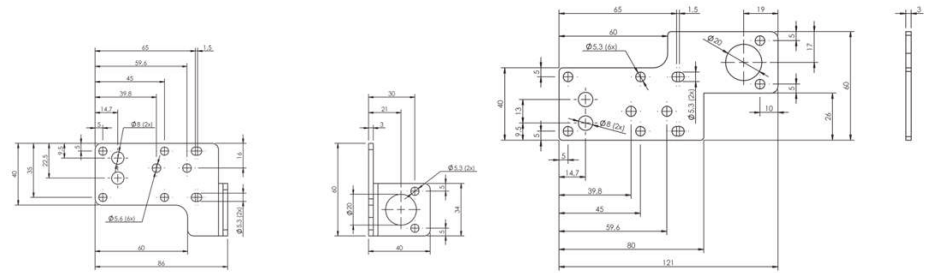
BAM0032

BAM003L



BAM0033

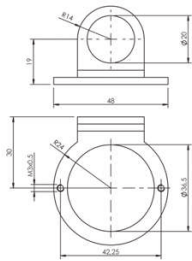
BAM003M



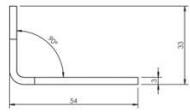
BAM003P

BAM003R

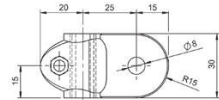
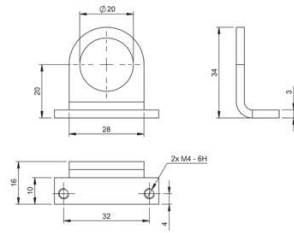
416 | Accessories | Fastening Technology



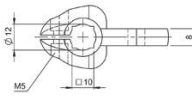
BAM01J2



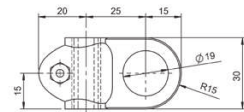
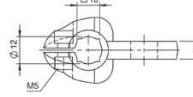
BAM01UL



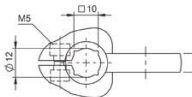
BAM002K



BAM002N



BAM002P





	BAM0099 BES 05,0-KH-2S	BAM0313 BAM MC-XA-023-D08,0-2-FS	BAM0318 BAM MC-XA-023-D08,0-2-FXL/W
Use	For sensors Ø5 mm, for M05 sensors, fastening length 30mm and longer	For M08 sensors, for sensors Ø8 mm, fastening length 32mm and longer	For M08 sensors, for sensors Ø8 mm, fastening length 50mm and longer
Material	Stainless steel (1.4104)	Brass nickel plated	Brass, PTFE coated
Dimension	Ø 13 x 24 mm	Ø 19.5 x 28 mm	Ø 19.5 x 48 mm
Mounting	Screws, terminals	Screws, terminals	Screws, terminals
Additional features	—	—	Weld immune
Productview	Page 424	Page 424	Page 424



	BAM00AR BES 08,0-KH-6S	BAM01UT BAM MC-XA-020-D12,0-2-FS/W	BAM0247 BAM MC-XA-023-D12,0-2-FM/W
Use	For sensors Ø8 mm, for M08 sensors, fastening length 32mm and longer	For sensors Ø12 mm, for M12 sensors, fastening length 32mm and longer	For sensors Ø12 mm, for M12 sensors, fastening length 36mm and longer
Material	Stainless steel (1.4305)	Brass, PTFE coated	Brass, PTFE coated
Dimension	Ø 17 x 32 mm	Ø 22 x 34 mm	Ø 23 x 34 mm
Mounting	Screws, terminals	Screws, terminals	Screws, terminals
Additional features	—	Weld immune	Weld immune
Productview	Page 424	Page 424	Page 425



	BAM0310 BAM MC-XA-023-D08,0-4-FS/W	BAM00AE BES 08,0-KH-2L	BAM00AH BES 08,0-KH-2S	BAM00AK BES 08,0-KH-2S/W	BAM00AL BES 08,0-KH-3L
Use	For M08 sensors, for sensors Ø8 mm, fastening length 32mm and longer	For sensors Ø8 mm, for M08 sensors, fastening length 50mm and longer	For sensors Ø8 mm, for M08 sensors, fastening length 32mm and longer	For sensors Ø8 mm, for M08 sensors, fastening length 32mm and longer	For M08 sensors, for sensors Ø8 mm, fastening length 50mm and longer
Material	Stainless steel (1.4104), coated, PTFE	Brass nickel plated	Brass nickel plated	Brass, PTFE coated	PBT nickel plated
Dimension	Ø 19.5 x 28 mm	Ø 17 x 48.5 mm	Ø 17 x 32 mm	Ø 17 x 32 mm	Ø 17 x 48.5 mm
Mounting	Screws, terminals	Screws, terminals	Screws, terminals	Screws, terminals	Screws, terminals
Additional features	Weld immune	—	—	Weld immune	—
Productview	Page 424	Page 424	Page 424	Page 424	Page 424



	BAM0246 BAM MC-XA-023-D12,0-2-FS	BAM024E BAM MC-XA-024-D12,0-2-FM/W	BAM024F BAM MC-XA-024-D12,0-2-FXL/W	BAM00CY BES 12,0-KH-2L	BAM00CZ BES 12,0-KH-2L/W
Use	For sensors Ø12 mm, for M12 sensors, fastening length 32mm and longer	For sensors Ø12 mm, for M12 sensors, fastening length 40mm and longer	For sensors Ø12 mm, for M12 sensors, fastening length 50mm and longer	For sensors Ø12 mm, for M12 sensors, fastening length 46mm and longer	For sensors Ø12 mm, for M12 sensors, fastening length 46mm and longer
Material	Brass nickel plated	Brass, PTFE coated	Brass, PTFE coated	Brass nickel plated	Brass, PTFE coated
Dimension	Ø 23 x 30.5 mm	Ø 23 x 38 mm	Ø 23 x 48.5 mm	Ø 22 x 44.5 mm	Ø 22 x 44.5 mm
Mounting	Screws, terminals	Screws, terminals	Screws, terminals	Screws, terminals	Screws, terminals
Additional features	—	Weld immune	Weld immune	—	Weld immune
Productview	Page 425	Page 425	Page 425	Page 425	Page 425



	BAM00E0 BES 12.0-KH-2S	BAM00E1 BES 12.0-KH-2S/W	BAM00E2 BES 12.0-KH-3L	
Use	For sensors Ø12 mm, for M12 sensors, fastening length 36mm and longer	For sensors Ø12 mm, for M12 sensors	For M12 sensors, fastening length 46mm and longer	
Material	Brass nickel plated	Brass, PTFE coated	PBT	
Dimension	Ø 22 x 34 mm	Ø 22 x 34 mm	Ø 22 x 44,5 mm	
Mounting	Screws, terminals	Screws, terminals	Screws, terminals	
Additional features	—	Weld immune	—	
Productview	Page 425	Page 425	Page 425	



	BAM00FR BES 18.0-KH-2M	BAM00FT BES 18.0-KH-2S	BAM00FW BES 18.0-KH-2S/W	
Use	For sensors Ø18 mm, for M18 sensors, fastening length 50mm and longer	For sensors Ø18 mm, for M18 sensors, fastening length 36mm and longer	For sensors Ø18 mm, for M18 sensors, fastening length 40mm and longer	
Material	Brass nickel plated	Brass nickel plated	Brass, PTFE coated	
Dimension	Ø 30 x 48.5 mm	Ø 30 x 36 mm	Ø 30 x 36 mm	
Mounting	Screws, terminals	Screws, terminals	Screws, terminals	
Additional features	—	—	Weld immune	
Productview	Page 426	Page 426	Page 426	



	BAM022L BAM MC-XA-023-D18,0-2-FL	BAM022K BAM MC-XA-023-D18,0-2-FS	BAM022M BAM MC-XA-024-D18,0-2-FM/W	BAM00FN BES 18.0-KH-2L	BAM00FP BES 18.0-KH-2L/W
Use	For sensors Ø18 mm, for M18 sensors, fastening length 50mm and longer	For sensors Ø18 mm, for M18 sensors, fastening length 40mm and longer	For sensors Ø18 mm, for M18 sensors, fastening length 50mm and longer	For sensors Ø18 mm, for M18 sensors, fastening length 50mm and longer	For sensors Ø18 mm, for M18 sensors, fastening length 60mm and longer
Material	Brass nickel plated	Brass nickel plated	Brass coated, PTFE LCP	Brass nickel plated	Brass, PTFE coated
Dimension	Ø 32 x 48.5 mm	Ø 32 x 36 mm	Ø 32 x 46 mm	Ø 30 x 58 mm	Ø 30 x 58 mm
Mounting	Screws, terminals	Screws, terminals	Screws, terminals	Screws, terminals	Screws, terminals
Additional features	—	—	Weld immune	—	Weld immune
Productview	Page 425	Page 426	Page 426	Page 426	Page 426



	BAM00FY BES 18.0-KH-3L	BAM0264 BAM MC-XA-023-D30,0-2-FS	BAM0265 BAM MC-XA-023-D30,0-2-FXL	BAM024C BAM MC-XA-023-D30,0-2-FXL/W	BAM024H BAM MC-XA-024-D30,0-2-FM/W
Use	For M18 sensors, fastening length 60mm and longer	For sensors Ø30 mm, for M30 sensors, fastening length 40mm and longer	For sensors Ø30 mm, for M30 sensors, fastening length 60mm and longer	For sensors Ø30 mm, for M30 sensors, fastening length 60mm and longer	For sensors Ø30 mm, for M30 sensors, fastening length 50mm and longer
Material	PBT	Brass nickel plated	Brass nickel plated	Brass, PTFE coated	Brass, PTFE coated
Dimension	Ø 30 x 59.5 mm	Ø 45 x 36 mm	Ø 45 x 58 mm	Ø 45 x 58 mm	Ø 45 x 48 mm
Mounting	Screws, terminals	Screws, terminals	Screws, terminals	Screws, terminals	Screws, terminals
Additional features	—	—	—	Weld immune	Weld immune
Productview	Page 426	Page 426	Page 426	Page 426	Page 427

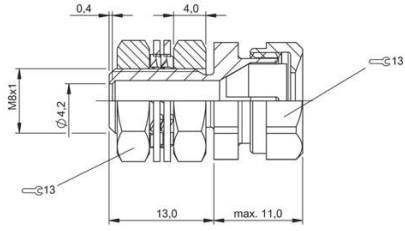


	BAM00J4 BES 30,0-KH-2L	BAM00J5 BES 30,0-KH-2L/W	BAM00J6 BES 30,0-KH-2S	
Use	For sensors Ø30 mm, for M30 sensors, fastening length 60mm and longer	For sensors Ø30 mm, for M30 sensors, fastening length 60mm and longer	For sensors Ø30 mm, for M30 sensors, fastening length 36mm and longer	
Material	Brass nickel plated	Brass, PTFE coated	Brass nickel plated	
Dimension	Ø 41 x 58 mm	Ø 41 x 58 mm	Ø 41 x 36 mm	
Mounting	Screws, terminals	Screws, terminals	Screws, terminals	
Additional features	–	Weld immune	–	
Productview	Page 427	Page 427	Page 427	

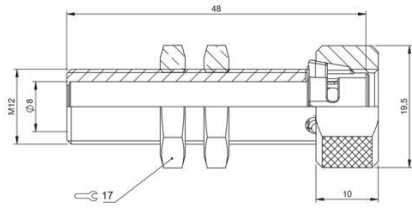


	BAM00J7 BES 30,0-KH-2S/W			
Use	For sensors Ø30 mm, for M30 sensors, fastening length 36mm and longer			
Material	Brass, PTFE coated			
Dimension	Ø 41 x 36 mm			
Mounting	Screws, terminals			
Additional features	Weld immune			
Productview	Page 427			

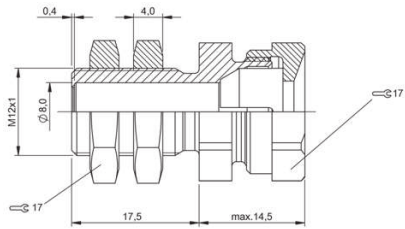
424 | Accessories | Fastening Technology



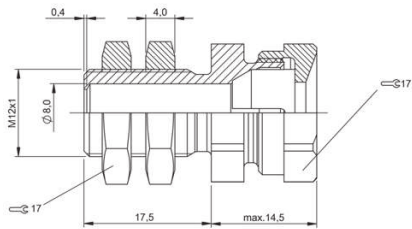
BAM0099



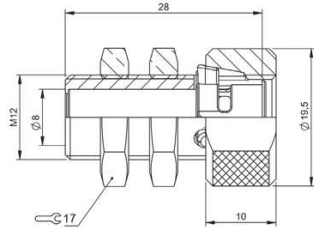
BAM0318



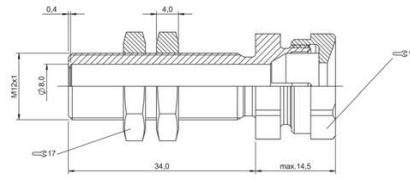
BAM00AH, BAM00AK



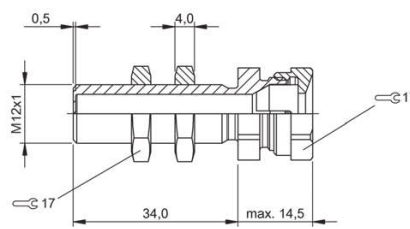
BAM00AR



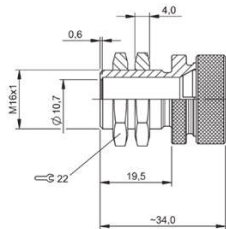
BAM0313, BAM0310



BAM00AE

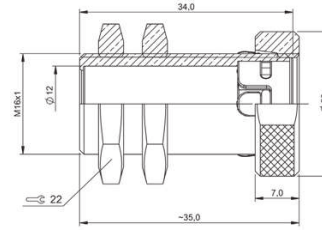


BAM00AL

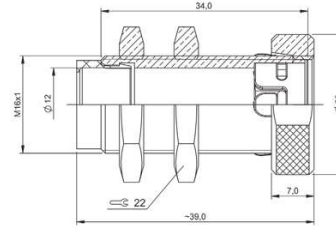


BAM01UT

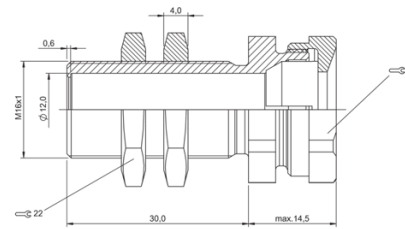
Proximity sensor mounts with positive stops | 425



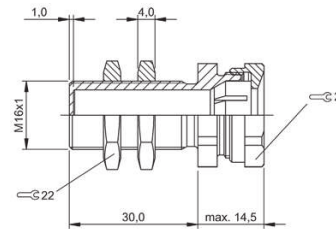
BAM0247



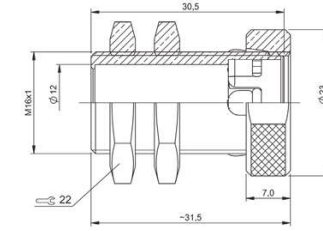
BAM024E



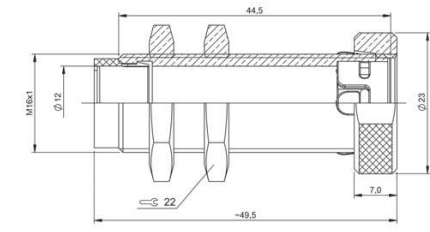
BAM00CY, BAM00CZ



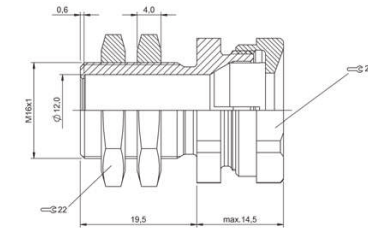
BAM00E2



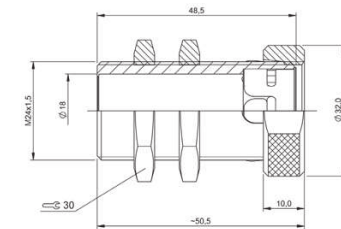
BAM0246



BAM024F

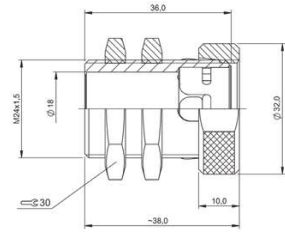


BAM00E0, BAM00E1

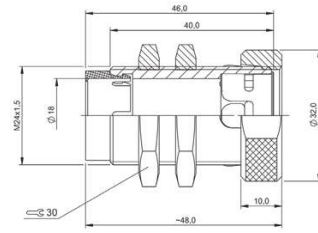
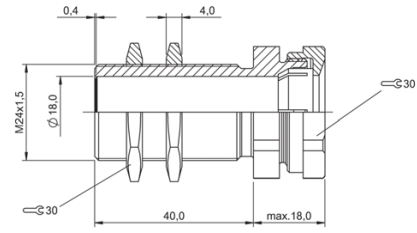


BAM022L

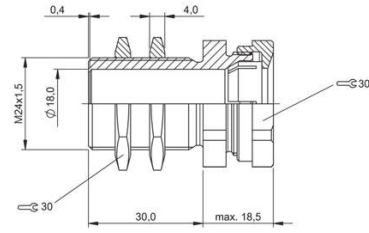
426 | Accessories | Fastening Technology



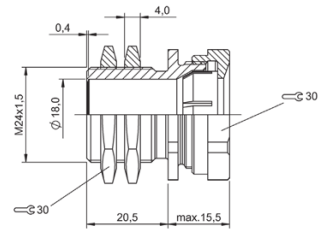
BAM022K



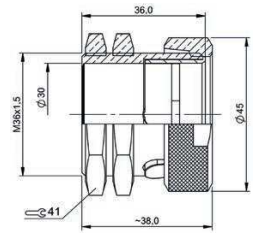
BAM022M



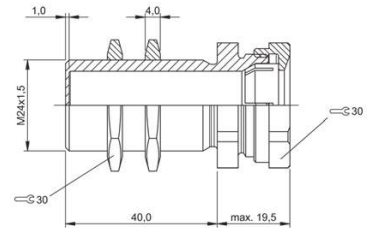
BAM00FN, BAM00FP



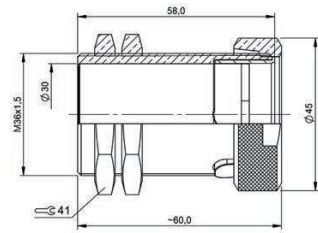
BAM00FT, BAM00FW



BAM0264

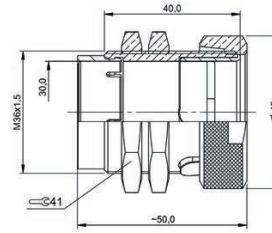


BAM00FY

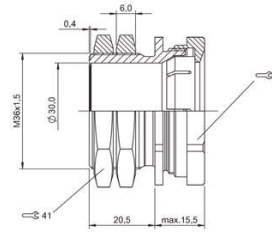


BAM0265, BAM024C

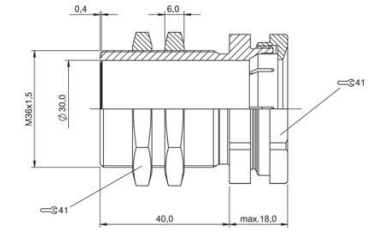
Proximity sensor mounts with positive stops | 427



BAM024H



BAM00J6, BAM00J7



BAM00J4, BAM00J5



	BAM02P1 BAM MC-CS-043-R08-R-01	BAM02P2 BAM MC-CS-043-R08-R-02	BAM037T BAM MC-XA-054-D02,0-4	
Use	for capacitive sensors BCS R08	for capacitive sensors BCS R08	for sensors and fiber optics Ø2	
Material	PP	PP	Brass nickel plated	
Dimension	22 x 10 x 35 mm	75 x 9,4 x 54 mm	8 x 10 mm	
Mounting	Screws, terminals	Screws, terminals	Screws, terminals	
Ambient temperature	-25...85 °C	-25...85 °C	-25...85 °C	
Approval/Conformity	—	—	—	
Productview	Page 430	Page 430	Page 430	



	BAM000W BAM MC-XA-002-D06,5-2	BAM000Y BAM MC-XA-002-D08,0-2	BAM0349 BAM MC-XA-049-D18,0-5	
Use	for sensors Ø6.5 mm	for sensors Ø8 mm	for ultrasonic sensors BUS, for sensors Ø18 mm	
Material	Brass nickel plated	Brass nickel plated	Stainless steel (1.4404) Silicon SI 70/101	
Dimension	8 x 11 mm	10 x 12 mm	Ø 30 x 25.5 mm	
Mounting	Screws, terminals	Screws, terminals	Screws, terminals	
Ambient temperature	-25...85 °C	-25...85 °C	-20...80 °C	
Approval/Conformity	—	—	EHEDG conformal	
Productview	Page 431	Page 431	Page 431	

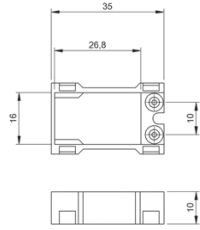


	BAM000T BAM MC-XA-002-D03,0-2	BAM037U BAM MC-XA-054-D03,0-4	BAM000U BAM MC-XA-002-D04,0-2	BAM037W BAM MC-XA-054-D04,0-4	BAM037Y BAM MC-XA-054-D05,0-4
Use	for sensors and fiber optics Ø3	for sensors and fiber optics Ø3	for sensors and fiber optics Ø4	for sensors and fiber optics Ø4	for sensors and fiber optics Ø5
Material	Brass nickel plated	Brass nickel plated	Brass nickel plated	Brass nickel plated	Brass nickel plated
Dimension	5 x 7 mm	8 x 10 mm	6 x 7 mm	8 x 10 mm	8 x 10 mm
Mounting	Screws, terminals	Screws, terminals	Screws, terminals	Screws, terminals	Screws, terminals
Ambient temperature	-25...85 °C	-25...85 °C	-25...85 °C	-25...85 °C	-25...85 °C
Approval/Conformity	—	—	—	—	—
Productview	Page 430	Page 430	Page 430	Page 430	Page 430

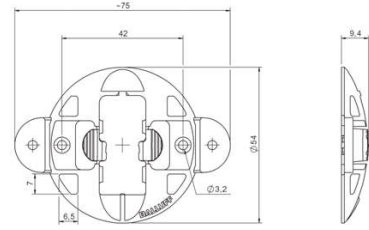
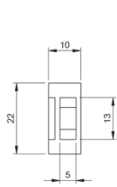


	BAM034A BAM MC-XA-049-D30,0-5			
Use	for ultrasonic sensors BUS, for sensors Ø30 mm			
Material	Stainless steel (1.4404) Silicon SI 70/101			
Dimension	Ø 50 x 40 mm			
Mounting	Screws, terminals			
Ambient temperature	-20...80 °C			
Approval/Conformity	EHEDG conformal			
Productview	Page 431			

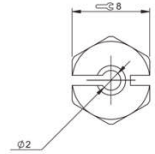
430 | Accessories | Fastening Technology



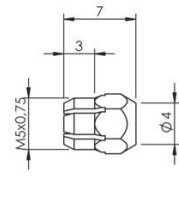
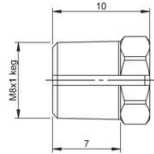
BAM02P1



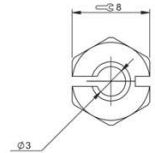
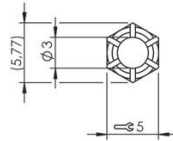
BAM02P2



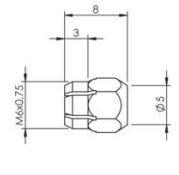
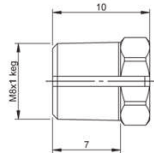
BAM037T



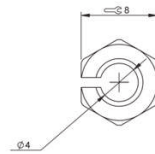
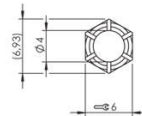
BAM000T



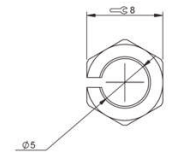
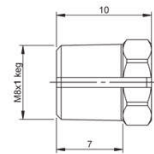
BAM037U



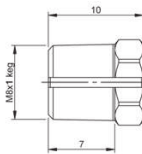
BAM000U



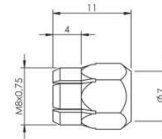
BAM037W



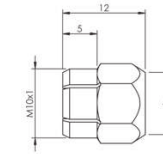
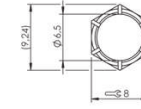
BAM037Y



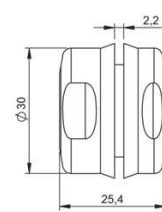
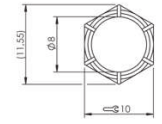
Prox sensor mounts without positive stops | 431



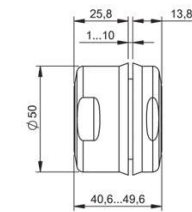
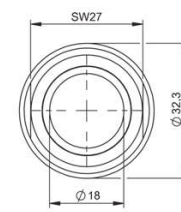
BAM000W



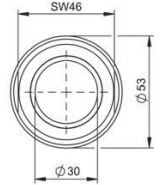
BAM000Y



BAM0349



BAM034A





	BAM009A BES 06,5-BS-1	BAM0269 BAM MC-XA-027-D08,0-1	BAM00A2 BES 08,0-BS-1
Version	Mounting clamp	Mounting clamp	Mounting clamp
Use	For sensors Ø6.5 mm	For sensors Ø8 mm	For sensors Ø8 mm
Material	PA 6	Aluminum anodized	PA 6
Dimension	27 x 12 x 16 mm	12 x 15 x 27 mm	27 x 12 x 16 mm
Mounting	Screws, terminals	Screws, terminals	Screws, terminals
Productview	Page 442	Page 442	Page 442



	BAM00F2 BES 18,0-BS-1	BAM00F3 BES 18,0-BS-2	BAM0327 BAM MC-XA-027-D20,0-1
Version	Mounting clamp	Mounting clamp	Mounting clamp
Use	For sensors Ø18 mm and M18, for read/write heads Ø18 mm	For sensors Ø18 mm and M18	For machine light Ø20 mm, for line laser Ø20 mm
Material	PA 6	PBT	Naturally anodized aluminum
Dimension	36 x 12 x 26 mm	20 x 32 x 40 mm	15 x 30 x 40 mm
Mounting	Screws, terminals	Screws, terminals	Screws, terminals
Productview	Page 443	Page 443	Page 443



	BAM0218 BAM MC-XA-027-D12,0-1	BAM00C4 BES 12,0-BS-1	BAM00EM BES 14,5-BS-1	BAM00ET BES 16,0-BS-1	BAM0219 BAM MC-XA-027-D18,0-1
Version	Mounting clamp	Mounting clamp	Mounting clamp	Mounting clamp	Mounting clamp
Use	For sensors Ø12 mm, for M12 sensors	For sensors Ø12 mm, for read/write heads Ø12 mm	For sensors Ø14.5 mm, for read/write heads Ø14.5 mm	For sensors Ø16 mm, for read/write heads Ø16 mm	For sensors Ø18 mm, for M18 sensors
Material	Aluminum anodized	PA 6	PA 6	PA 6	Aluminum anodized
Dimension	12 x 20 x 32 mm	32 x 12 x 20 mm	32 x 12 x 20 mm	36 x 12 x 26 mm	12 x 26 x 36 mm
Mounting	Screws, terminals	Screws, terminals	Screws, terminals	Screws, terminals	Screws, terminals
Productview	Page 442	Page 442	Page 442	Page 442	Page 442



	BAM0377 BAM MC-XA-053-D20,0-1	BAM00H7 BES 20,0-BS-1	BAM00H9 BES 22,0-BS-1	BAM01U0 BAM MC-XA-017-D30,0-1	BAM00HN BES 30,0-BS-1
Version	Mounting clamp	Mounting clamp	Mounting clamp	Mounting clamp	Mounting clamp
Use	For machine light Ø20 mm, for line laser Ø20 mm	For sensors Ø20 mm	For sensors Ø22 mm	For sensors Ø30 mm, for M30 sensors	For sensors Ø30 mm, for read/write heads Ø30 mm
Material	Naturally anodized aluminum	PA 6	PA 6	Aluminum anodized	PA 6
Dimension	15 x 29 x 35 mm	45 x 15 x 30 mm	45 x 15 x 30 mm	15 x 46 x 64 mm	55 x 18 x 38 mm
Mounting	Screws, terminals	Screws, terminals	Screws, terminals	Screws, terminals	Screws, terminals
Productview	Page 443	Page 443	Page 443	Page 443	Page 443



	BAM035Y BAM FS-AM-011-D45,0-4	BAM0379 BAM MC-XA-050-D45,0-1	BAM0360 BAM MC-XE-051-D45,0-3	
Version	Holder	Installation set	Mounting clamp	
Use	For machine light Ø45 mm, for mounting cuffs Ø45mm	For machine light Ø45 mm	For machine light Ø45 mm	
Material	Stainless steel	Naturally anodized aluminum	Steel zinc plated EPDM	
Dimension	1.5 x 40 x 76 mm	34 x 62.3 x 50 mm	16 x 62.5 x 80 mm	
Mounting	Clamps	Screws, terminals	Clamps	
Productview	Page 444	Page 444	Page 444	



	BAM026J BAM MC-XA-032-Q40-1	BAM00JW BES Q40-HW-1	BAM00JY BES Q40-HW-2	
Version	Holder	Holder	Mounting block	
Use	For capacitive sensors BCS Q40, for inductive sensors BES Q40, for inductive couplers BIC Q40	For capacitive sensors BCS Q40	For capacitive sensors BCS Q40, for inductive sensors BES Q40, for inductive couplers BIC Q40	
Material	Aluminum anodized	Aluminum anodized	Die-cast zinc	
Dimension	50 x 5 x 80 mm	61.5 x 5 x 35 mm	40 x 25 x 40 mm	
Mounting	Screws	Screws	Screws, terminals	
Productview	Page 445	Page 445	Page 445	



	BAM035Z BAM MC-XE-052-D45,0-1	BAM00P0 BFO 08,0-KB-1	BAM02WA BAM MB-XE-031-Q40-A	BAM034N BAM MB-XE-031-Q40-A-01	BAM01TM BAM MC-XA-016-Q40-1
Version	Installation set	Mounting block	Holder	Holder	Holder
Use	For machine light Ø45 mm	For sensors Ø8 mm	For capacitive sensors BCS Q40, for inductive couplers BIC Q40	For capacitive sensors BCS Q40, for inductive sensors BES Q40	For capacitive sensors BCS Q40, for Unicomcompact sensors, for inductive sensors BES Q40, for inductive couplers BIC Q40
Material	Naturally anodized aluminum	Aluminum	PA 6	PA 6	Aluminum anodized Plastic
Dimension	20 x 56 x 50 mm	16 x 20 x 12 mm	40 x 30 x 62.7 mm	40 x 30 x 65 mm	100 x 5 x 40 mm
Mounting	Clamps	Screw M3	Screws	Screws	Screws
Productview	Page 444	Page 444	Page 444	Page 444	Page 444



	BAM00JZ BES Q40-HW-3	BAM00K3 BES R04-MF-01	BAM02Y5 BAM MB-XA-029-D30,0-5	BAM02Y4 BAM MB-XA-030-D30,0-5	BAM0158 BES 516-MB-08
Version	Mounting block	Holder	Mounting bracket	Mounting bracket	Mounting bracket
Use	For processors BIS C-324, for capacitive sensors BCS Q40, for inductive sensors BES Q40, for inductive couplers BIC Q40	For inductive sensors BES R04	For sensors Ø30 mm, for temperature sensor BTS M30	For sensors Ø30 mm, for temperature sensor BTS M30	For M08 sensors
Material	Aluminum anodized	Stainless steel	Stainless steel (1.4404)	Stainless steel (1.4404)	Stainless steel
Dimension	22 x 40 x 40 mm	4 x 16.2 x 9 mm	50 x 63 x 108 mm	30 x 83 x 108 mm	29 x 34 x 76 mm
Mounting	Screws, terminals	Screws	Clamps	Clamps	Screws
Productview	Page 445	Page 445	Page 445	Page 445	Page 445



	BAM0159 BES 516-MB-12	BAM015A BES 516-MB-18	BAM015C BES 516-MB-30	
Version	Mounting bracket	Mounting bracket	Mounting bracket	
Use	For M12 sensors	For M18 sensors	For M30 sensors	
Material	Stainless steel	Stainless steel	Stainless steel	
Dimension	29 x 34 x 76 mm	29 x 34 x 76 mm	48 x 55 x 108 mm	
Mounting	Screws	Screws	Screws	
Productview	Page 446	Page 446	Page 446	



	BAM009C BES 06,5-KB-1	BAM009E BES 06,5-KB-3	BAM009F BES 06,5-KB-7	
Version	Mounting block	Mounting block	Mounting block	
Use	For sensors Ø6.5 mm	For sensors Ø6.5 mm	For sensors Ø6.5 mm	
Material	PA 6	PA 6	Aluminum anodized	
Dimension	17 x 12 x 9 mm	16 x 12 x 20 mm	16 x 12 x 20 mm	
Mounting	Screws, terminals	Screws, terminals	Screws, terminals	
Productview	Page 447	Page 447	Page 447	



	BAM0092 BES 03,0-KB-3	BAM0094 BES 04,0-KB-1	BAM0095 BES 04,0-KB-3	BAM0097 BES 05,0-KB-1	BAM0098 BES 05,0-KB-3
Version	Mounting block	Mounting block	Mounting block	Mounting block	Mounting block
Use	For sensors and fiber optics Q3	For sensors and fiber optics Q4	For sensors and fiber optics Q4	For sensors Ø5 mm, for M05 sensors	For sensors Ø5 mm, for M05 sensors
Material	PA 6	PA 6	PA 6	PA 6	PA 6
Dimension	16 x 12 x 20 mm	17 x 12 x 9 mm	16 x 12 x 20 mm	17 x 12 x 9 mm	16 x 12 x 20 mm
Mounting	Screws, terminals	Screws, terminals	Screws, terminals	Screws, terminals	Screws, terminals
Productview	Page 446	Page 446	Page 446	Page 446	Page 446



	BAM00A4 BES 08,0-KB-10/W	BAM00A5 BES 08,0-KB-3	BAM00A6 BES 08,0-KB-3-F	BAM00AA BES 08,0-KB-7	BAM00AW BES 08,1-KB-4-F
Version	Mounting block	Mounting block	Mounting clamp with positive stop	Mounting block	Mounting clamp with positive stop
Use	For sensors Ø8 mm, for M08 sensors	For sensors Ø8 mm, for M08 sensors	For sensors Ø8 mm, for M08 sensors	For sensors Ø8 mm, for M08 sensors	For sensors Ø8 mm, for M08 sensors
Material	Galvanized steel	PA 6	PA 6	Aluminum anodized	Aluminum
Dimension	35 x 12.7 x 28.6 mm	16 x 12 x 20 mm	16 x 12 x 20 mm	16 x 12 x 20 mm	28 x 30 x 12 mm
Mounting	Screws, terminals	Screws, terminals	Screws, terminals	Screws, terminals	Screws, terminals
Productview	Page 447	Page 447	Page 447	Page 447	Page 447



	BAM00C6 BES 12.0-KB-10/W	BAM00C7 BES 12.0-KB-2	BAM00C9 BES 12.0-KB-3
Version	Mounting block	Mounting block	Mounting block
Use	For sensors Ø12 mm, for M12 sensors	For sensors Ø12 mm, for M12 sensors	For sensors Ø12 mm, for M12 sensors
Material	Galvanized steel	PA 6	PA 6
Dimension	38.1 x 19 x 34.9 mm	40 x 16 x 40 mm	40 x 18 x 30 mm
Mounting	Screws, terminals	Screws, terminals	Screws, terminals
Productview	Page 448	Page 448	Page 448



	BAM00F7 BES 18.0-KB-3	BAM00F8 BES 18.0-KB-3-F	BAM00FC BES 18.0-KB-4-F
Version	Mounting block	Mounting clamp with positive stop	Mounting clamp with positive stop
Use	For sensors Ø18 mm, for M18 sensors	For sensors Ø18 mm, for M18 sensors	For sensors Ø18 mm, for M18 sensors
Material	PA 6	PA 6	Anodized aluminum
Dimension	40 x 24 x 30 mm	40 x 24 x 30 mm	40 x 22 x 28 mm
Mounting	Screws, terminals	Screws, terminals	Screws, terminals
Productview	Page 449	Page 449	Page 449



	BAM00CA BES 12.0-KB-3-F	BAM00CF BES 12.0-KB-4-F	BAM00EK BES 12.0-KB-9S	BAM01KM BOS 12.0-KB-1	BAM00F5 BES 18.0-KB-10/W
Version	Mounting clamp with positive stop	Mounting clamp with positive stop	Mounting block	Mounting clamp with ball joint	Mounting block
Use	For sensors Ø12 mm, for M12 sensors	For sensors Ø12 mm, for M12 sensors	For sensors Ø12 mm, for M12 sensors	For M12 sensors	For sensors Ø18 mm, for M12 sensors
Material	PA 6	Anodized aluminum	Aluminum	PA	Galvanized steel
Dimension	40 x 18 x 30 mm	35 x 16 x 28 mm	31.8 x 18 x 38.1 mm	32.5 x 66 x 57.2 mm	38.1 x 25.4 x 38.1 mm
Mounting	Screws, terminals	Screws, terminals	Screws, terminals	Screws, terminals	Screws, terminals
Productview	Page 448	Page 448	Page 448	Page 448	Page 448



	BAM00FE BES 18.0-KB-5-F	BAM00T3 BOS 18.0-KB-1	BAM00HR BES 30.0-KB-10/W	BAM00HU BES 30.0-KB-3-F	BAM00HW BES 30.0-KB-4-F
Version	Mounting clamp with positive stop	Mounting clamp with ball joint	Mounting block	Mounting clamp with positive stop	Mounting clamp with positive stop
Use	For sensors Ø18 mm, for M18 sensors	For M18 sensors	For sensors Ø30 mm, for M30 sensors	For sensors Ø30 mm, for M30 sensors	For sensors Ø30 mm, for M30 sensors
Material	PC	PA GF	Galvanized steel	PA 6	Anodized aluminum
Dimension	30 x 24 x 29 mm	32.5 x 66 x 57.2 mm	44.5 x 38.1 x 60 mm	54 x 36 x 30 mm	56 x 34 x 34 mm
Mounting	Clamps	Screws, terminals	Screws, terminals	Screws, terminals	Screws, terminals
Productview	Page 449	Page 449	Page 449	Page 449	Page 449



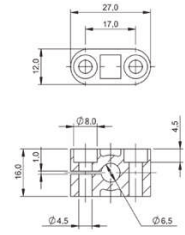
	BAM00HY BES 30.0-KB-5-F	BAM00TN BOS 30.0-KB-1	BAM02UE BAM MC-XA-014-Q08-2	
Version	Mounting clamp with positive stop	Mounting clamp with ball joint	Holder	
Use	For sensors Q30 mm, for M30 sensors	For M30 sensors	For photoelectric sensors BOS Q08M	
Material	PC	PA GF	Brass white bronze	
Dimension	35 x 34.5 x 41 mm	32.5 x 66 x 57.2 mm	13.5 x 14 x 65 mm	
Mounting	Clamps	Screws, terminals	Minitec Profile	
Productview	Page 450	Page 450	Page 450	



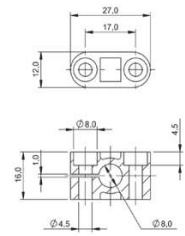
	BAM00HH BES 30-HW-1			
Version	Mounting bracket			
Use	For M30 sensors, for positive stop M30			
Material	Aluminum			
Dimension	40 x 40 x 60 mm			
Mounting	Screws			
Productview	Page 451			



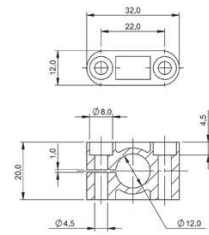
	BAM00NJ BES Q08-KH-2	BAM01AU BES Q08-KH-3	BAM009U BES 08-HW-1	BAM00C0 BES 12-HW-1	BAM00EY BES 18-HW-1
Version	Holder	Holder	Mounting bracket	Mounting bracket	Mounting bracket
Use	For photoelectric sensors BOS Q08M	For photoelectric sensors BOS Q08M	For M08 sensors, for positive stop M8	For M12 sensors, for positive stop M12	For M18 sensors, for positive stop M18
Material	Copper zinc plated	Copper zinc plated	Aluminum	Aluminum	Aluminum
Dimension	17.6 x 12.1 x 61.5 mm	17.6 x 12.1 x 60 mm	25 x 30 x 30 mm	25 x 30 x 30 mm	30 x 40 x 40 mm
Mounting	Item Profile 8mm slot	Bosch profile 10 mm slit	Screws	Screws	Screws
Productview	Page 450	Page 450	Page 450	Page 450	Page 450



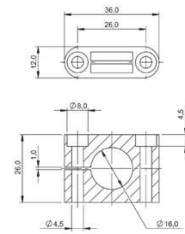
BAM009A



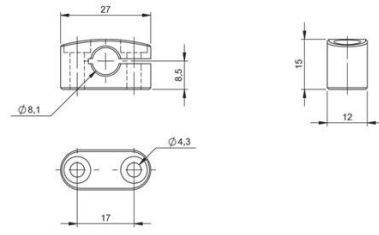
BAM00A2



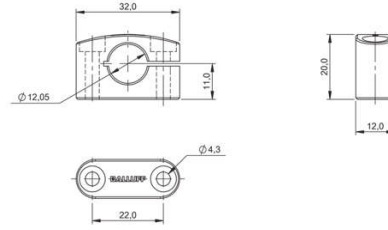
BAM00C4



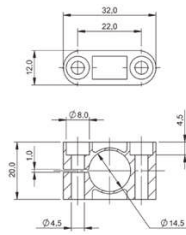
BAM00ET



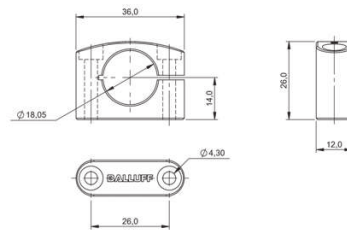
BAM0269



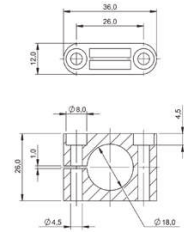
BAM0218



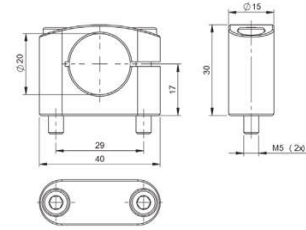
BAM00EM



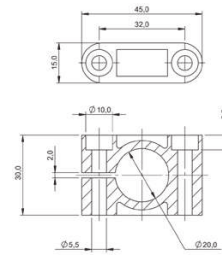
BAM0219



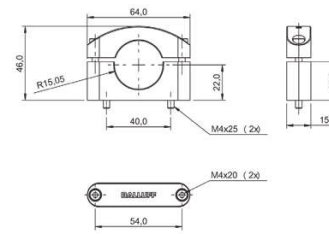
BAM00F2



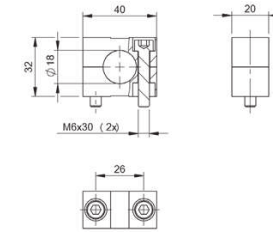
BAM0327



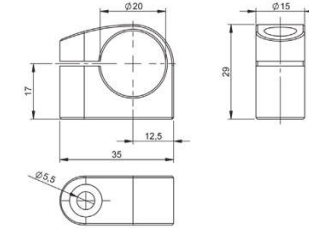
BAM00H7



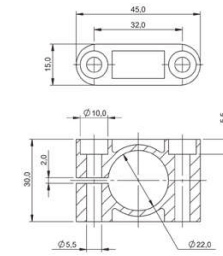
BAM01U0



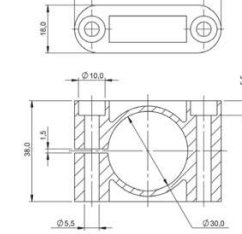
BAM00F3



BAM0377

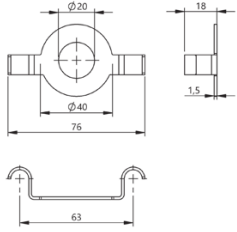


BAM00H9

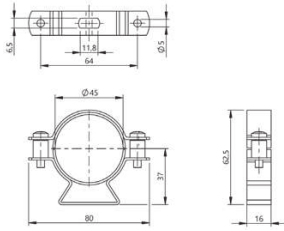


BAM00HN

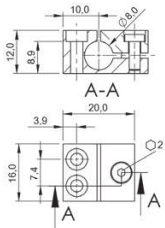
444 | Accessories | Fastening Technology



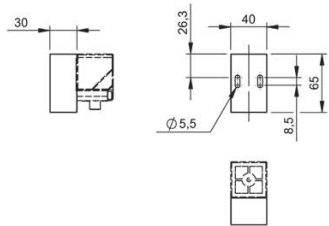
BAM035Y



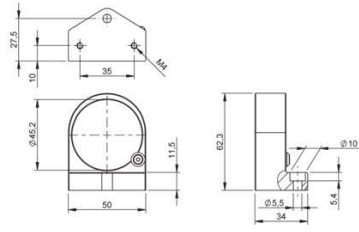
BAM0360



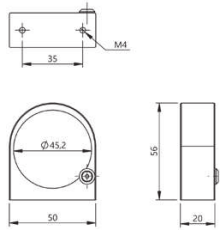
BAM00P0



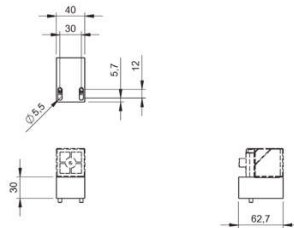
BAM034N



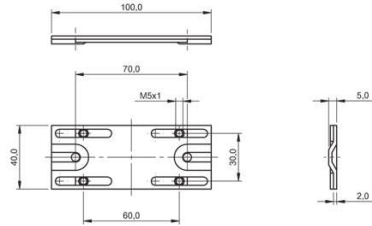
BAM0379



BAM035Z

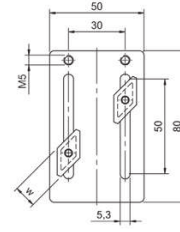


BAM02WA

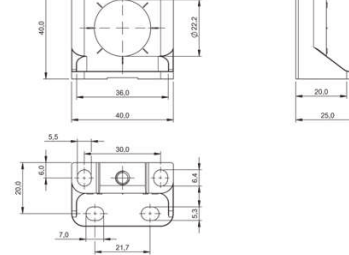


BAM01TM

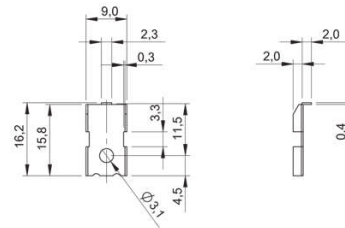
Universal brackets | 445



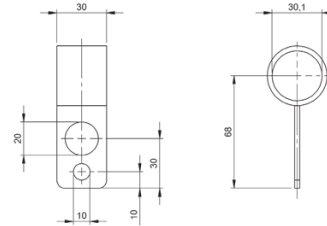
BAM026J



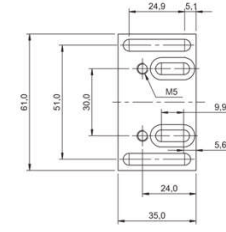
BAM00JY



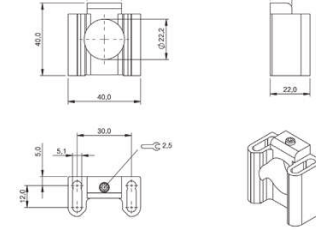
BAM00K3



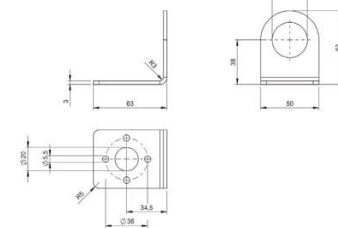
BAM02Y4



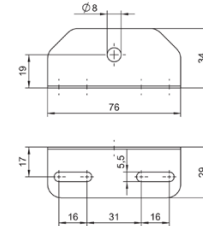
BAM00JW



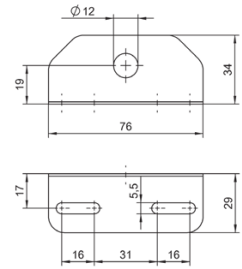
BAM00JZ



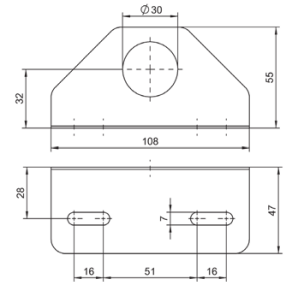
BAM02Y5



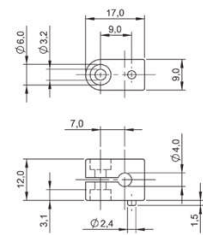
BAM0158



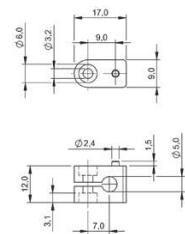
BAM0159



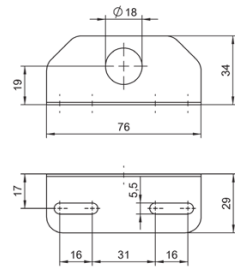
BAM015C



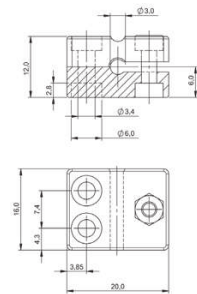
BAM0094



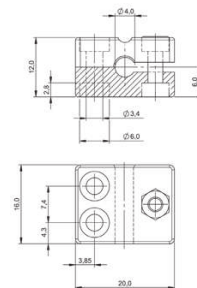
BAM0097



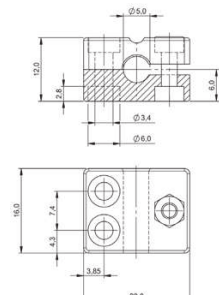
BAM015A



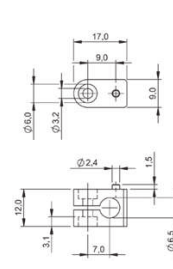
BAM0092



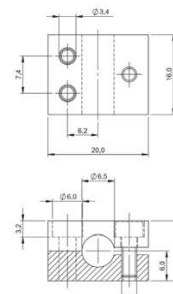
BAM0095



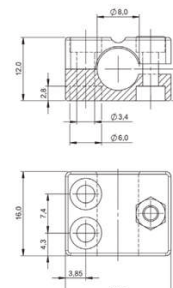
BAM0098



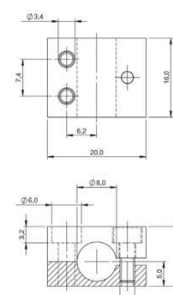
BAM009C



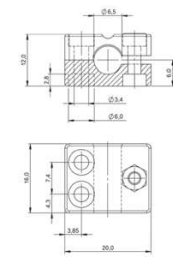
BAM009F



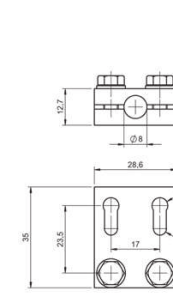
BAM00A5



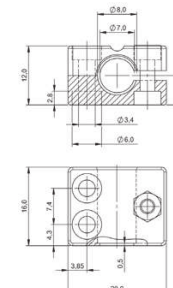
BAM00AA



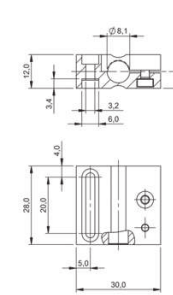
BAM009E



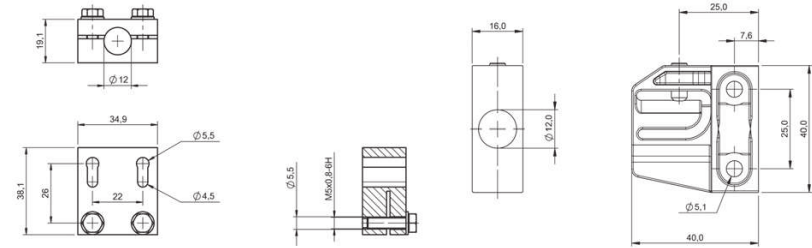
BAM00A4



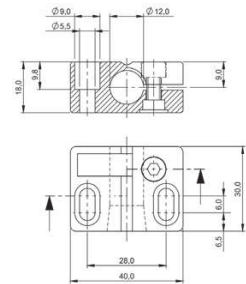
BAM00A6



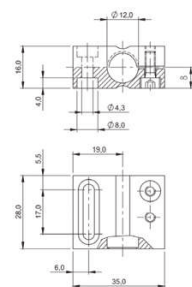
BAM00AW



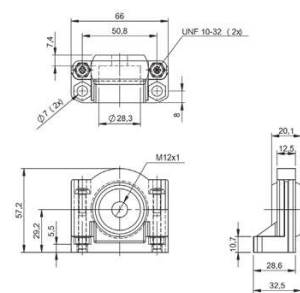
BAM00C6



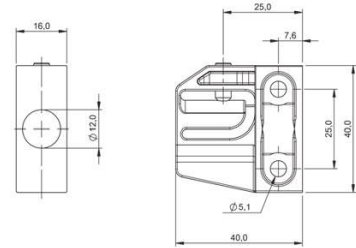
BAM00C9



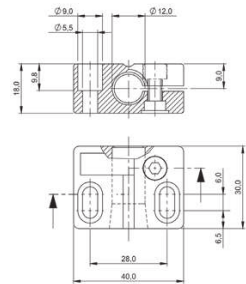
BAM00CF



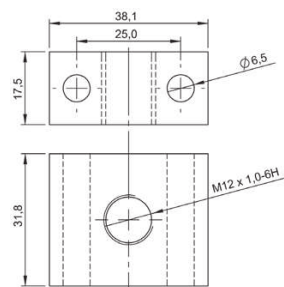
BAM01KM



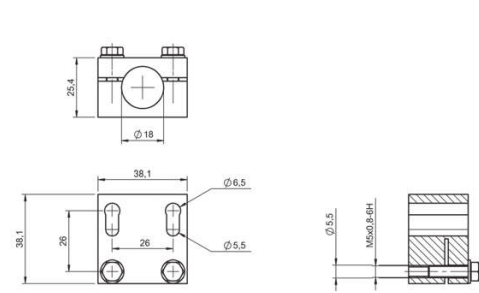
BAM00C7



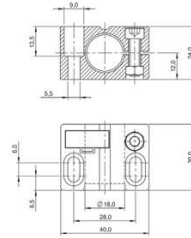
BAM00CA



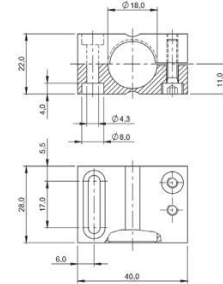
BAM00EK



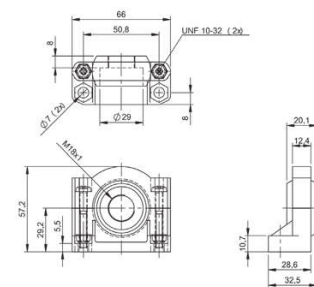
BAM00F5



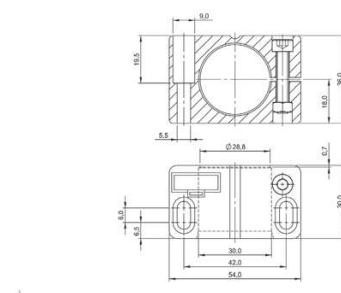
BAM00F7



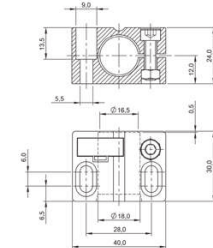
BAM00FC



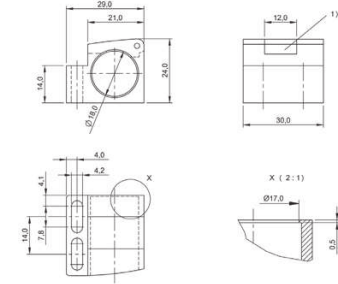
BAM00T3



BAM00HU

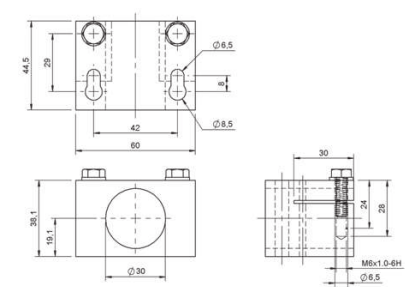


BAM00F8

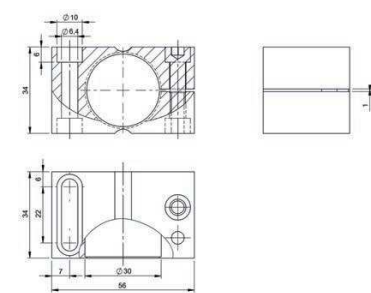


1) Schließsystem mechanisch

BAM00FE

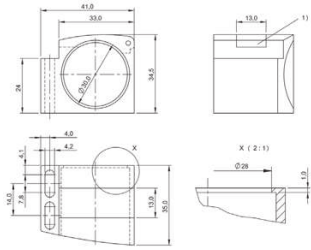


BAM00HR



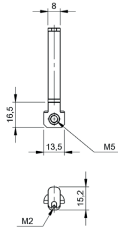
BAM00HW

450 | Accessories | Fastening Technology

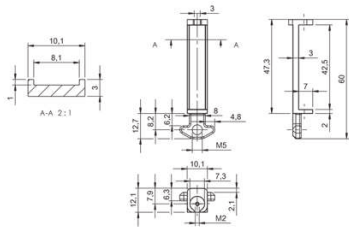


1) Schließsystem mechanisch

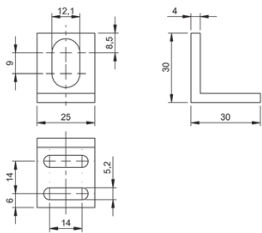
BAM00HY



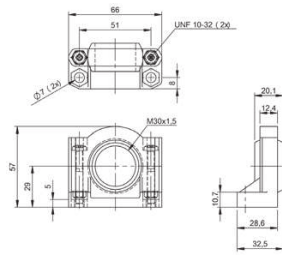
BAM02UE



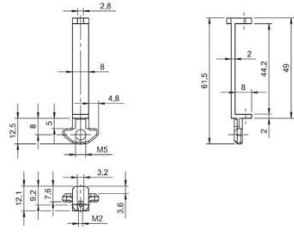
BAM01AU



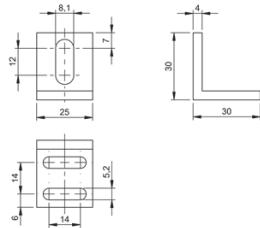
BAM00CO



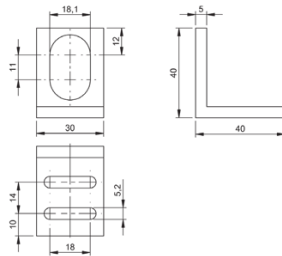
BAM00TN



BAM00NJ

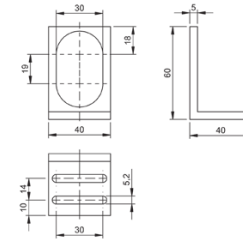


BAM009U



BAM00EY

Universal brackets | 451



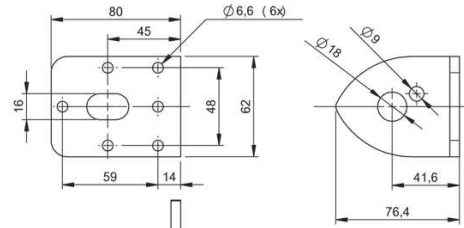
BAM00HH



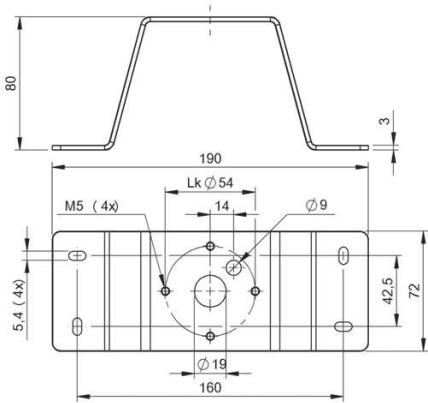
	BAM0255 BAM MB-NI-016-800-1	BAM026K BAM MB-NI-017-100-1	
Principle of operation	holding SmartLight	holding SmartLight	
Use	for signal light Smartlight	for signal light Smartlight	
Material	Naturally anodized aluminum	Naturally anodized aluminum	
Dimension	80 x 6 x 62 mm	Ø 70 x 100 mm	
Mounting	Screws	Screws	
Productview	Page 454	Page 455	



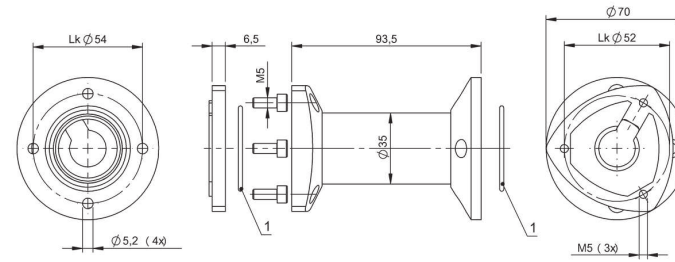
	BAM034C BAM MB-NI-017-250-1	BAM026L BAM MB-NI-017-400-1	BAM02M5 BAM MB-XA-025-D19.0-1	
Principle of operation	holding SmartLight	holding SmartLight	holding SmartLight	
Use	for signal light Smartlight	for signal light Smartlight	for signal light Smartlight	
Material	Naturally anodized aluminum	Naturally anodized aluminum	Naturally anodized aluminum	
Dimension	Ø 70 x 250 mm	Ø 70 x 400 mm	121 x 72 x 80 mm	
Mounting	Screws	Screws	Screws	
Productview	Page 455	Page 455	Page 454	



BAM0255

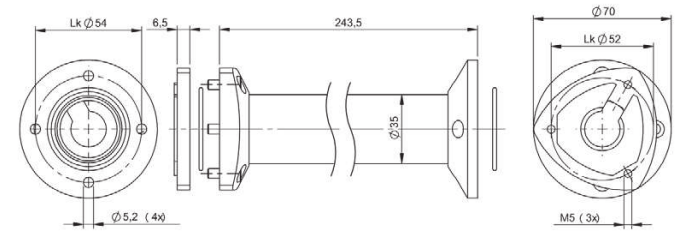


BAM02M5

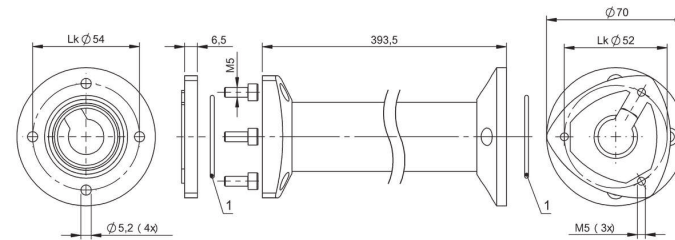


1) O-ring

BAM026K



BAM034C



1) O-ring

BAM026L



	BAM02J9 BAM MD-VS-002-0002	BAM02JA BAM MD-VS-002-0003	BAM02JC BAM MD-VS-002-0004	
Version	Holder	Stand	Positioning	
Application	for table or wall mount	Tripod holder with continuous read function	Height adjustable positioning	
Use	for BVS HS-P	for BVS HS-P	for BVS HS-P	
Material	ABS	ABS powder coated Steel	ABS Steel	
Dimension	84 x 126 mm	98 x 318 x 150 mm	168 x 102 mm	
Mounting	Screws, Glue	Screws, Glue	hanging	
Productview	Page 458	Page 458	Page 458	



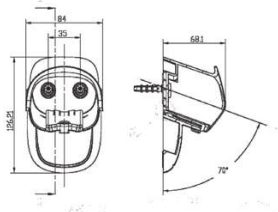
	BAM01YP BMS CS-M-S25-DX15-00	BAM02ZU BMS CU-M-S25-D030-01	BAM01YT BMS CUJ-M-S25-D045-00	
Version	Quick-change plate	Holder, quick-change plate	3D holder system	
Application	Adapter	for mounting profiles, for quick-change plate	for mounting profiles, with orientation in rotational position and angle orientation, for quick-change plate	
Use	for BVS ...-E, for Smart-Camera BVS SC, for connection plate VESA 75/100, for 3D holding system, for holding of the quick-change plate	for BVS ...-E, for Smart-Camera BVS SC	for BVS ...-E, for Smart-Camera BVS SC	
Material	Naturally anodized aluminum	Naturally anodized aluminum	Naturally anodized aluminum	
Dimension	55 x 7,5 x 60 mm	15.1 x 60 x 60 mm	60 x 84 x 60 mm	
Mounting	Screws, terminals	Screws	Screws, terminals	
Productview	Page 459	Page 459	Page 459	



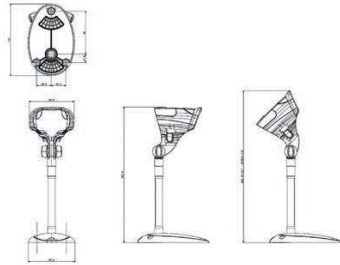
	BAM02Y8 BAM MD-VS-002-0005	BAM02Y9 BAM MD-VS-002-0006	BAM02ZW BAM MB-MS-038-B19-1	BAM01AC BAM MB-XA-003-B03-1	BAM01TK BMS CS-M-D12-IX13-01
Version	Stand	Holder for table/wall mount	Mounting brackets	Holder	Holder
Application	Tripod holder with continuous read function	—	—	—	for protective housing BVS
Use	for BVS HS-Q	for BVS HS-Q	for BVS ...-E, for Smart-Camera BVS SC	for BVS ...-E	for BVS ...-E
Material	ABS Steel	ABS	Naturally anodized aluminum	Naturally anodized aluminum	Stainless steel (1.4301)
Dimension	100 x 160 mm	75 x 115 mm	3 x 60 x 80 mm	106 x 50 x 75 mm	172 x 34 x 65 mm
Mounting	Screws, Glue	Screws, Adhesive	Screws, terminals	Screws, Clamps	Screws, terminals
Productview	Page 458	Page 458	Page 458	Page 458	Page 458



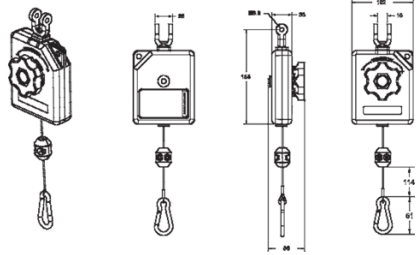
	BAM00WN BVS Z-MB-01	BAM02P7 BAM MB-VS-026-B14-1	BAM01AE BAM MB-XA-002-B02-1	BAM027R BAM MB-XA-018-B11-4	BAM02ML BAM MC-XA-042-D20,0-1
Version	Mounting brackets	Mounting brackets	Mounting brackets	Connection pieces	Holder
Application	for wall mount, for mounting system BMS	for ring light BAE	for mounting system BMS	for wall mount, for mounting profiles	for wall mount, for mounting profiles
Use	for BVS ...-E	for BVS SC-...	for line light BAE	for line light BAE	for machine light Ø20 mm
Material	Stainless steel	Naturally anodized aluminum	Naturally anodized aluminum	Stainless steel	Naturally anodized aluminum
Dimension	74 x 47 x 51 mm	110 x 3 x 64 mm	61 x 40 x 43 mm	23.5 x 19.5 x 23.5 mm	15 x 29 x 35 mm
Mounting	Screws, Clamps	Screws	Screws, terminals	Screws	Screws, terminals
Productview	Page 459	Page 459	Page 459	Page 459	Page 459



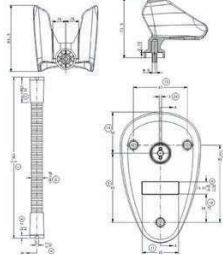
BAM02J9



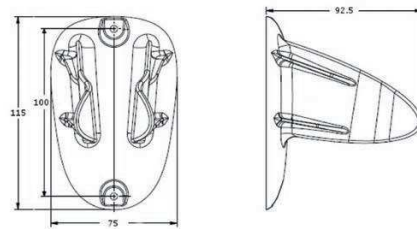
BAM02JA



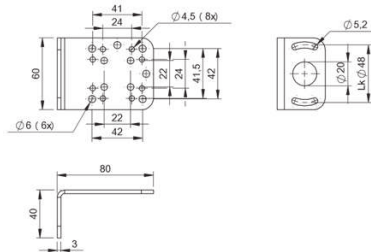
BAM02JC



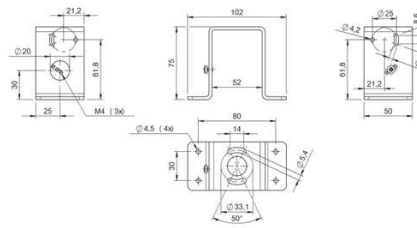
BAM02Y8



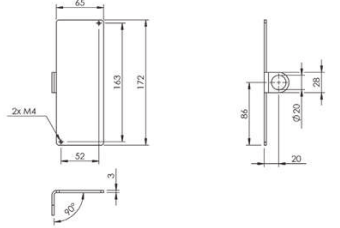
BAM02Y9



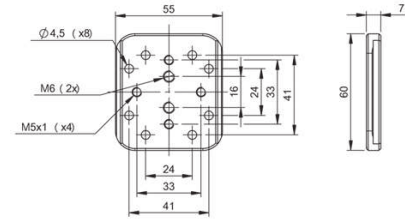
BAM02ZW



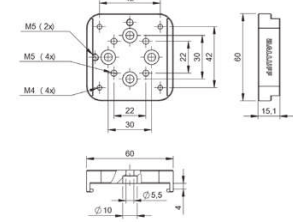
BAM01AC



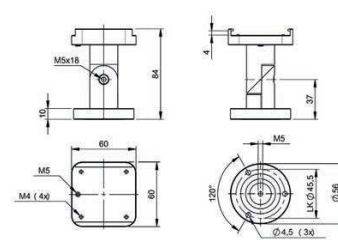
BAM01TK



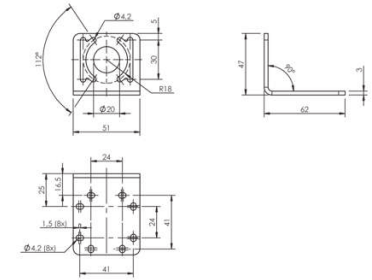
BAM01YP



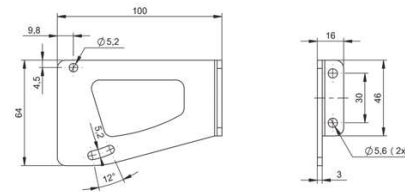
BAM02ZU



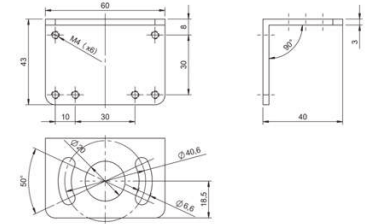
BAM01YT



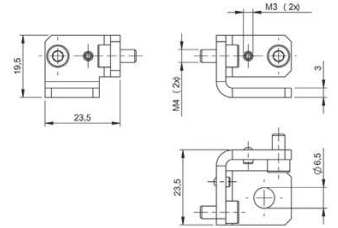
BAM00WN



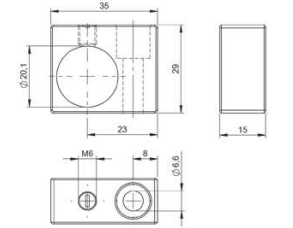
BAM02P7



BAM01AE



BAM027R



BAM02ML



	BAM0127 BIS C-122-AD-1	BAM0128 BIS C-122-AD-2	BAM01LW BIS Z-SP-003
Principle of operation	Adapter BIS	Adapter BIS	Spacer ring, piece
Use	Mounting adapter for data carriers BIS C-122	Mounting adapter for data carriers BIS C-122	Mounting set and spacer for data carriers BIS U-100
Material	PA 6	PA 6	PA GF
Dimension	Ø 11.6 x 8 mm	Ø 11.6 x 6 mm	Ø 10 x 10 mm
Mounting	Screws	—	Screws
Ambient temperature	—	—	-40...70 °C
Ambient temperature	—	—	-40...70 °C
Productview	Page 464	Page 464	Page 464



	BAM012H BIS L-203-ZH1	BAM012L BIS Z-HW-001	BAM01FT BIS Z-HW-002
Principle of operation	Holding RFID system	Holding RFID system	Holding RFID system
Use	Holder for data carriers BIS L-103/203	for processor units C/L/M-600x	Holder for mounting data carriers BIS M-107
Material	POM	Aluminum (mounting bracket) PA 6 (rail holder)	PPS GF40
Dimension	Ø 16 x 18 mm	100 x 50 mm	Ø 30 x 13.7 mm
Mounting	Clamps	Mounting rail, DIN rail	Screws
Ambient temperature	-25...85 °C	0...70 °C	0...70 °C
Ambient temperature	-25...85 °C	0...70 °C	0...70 °C
Productview	Page 465	Page 465	Page 465



	BAM020R BIS Z-SP-004	BAM01MY BAM MB-XA-010-B07-4	BAM02PN BAM MB-XA-027-B15-4	BAM01Y3 BAM MC-XA-018-B04-4	BAM012E BIS C-108-MF-01
Principle of operation	Spacer ring, piece	Holding RFID system	Holding RFID system	Holding RFID system	Holding RFID system
Use	Mounting set and spacer for high-temperature data carriers	Mounting bracket for read/write heads for Bosch TS1 and TS2	Mounting bracket for BIS M-400x	Mounting bracket for read/write heads BIS VM-3xx	Mounting plate for BIS C-108
Material	Ceramic	Stainless steel (1.4301)	Stainless steel (1.4401)	Stainless steel (1.4310)	Aluminum
Dimension	Ø 25.4 x 25.4 mm	105 x 14 x 32 mm	86 x 2.5 x 35 mm	78.2 x 11.8 x 34.8 mm	100 x 5 mm
Mounting	Screws	Screw M4	Screws, terminals	Screws	Screws
Ambient temperature	-40...240 °C	—	—	—	-30...70 °C
Ambient temperature	-40...240 °C	—	—	—	-30...70 °C
Productview	Page 464	Page 464	Page 464	Page 464	Page 464



	BAM01JK BIS Z-HW-003	BAM01KN BIS Z-HW-004	BAM0336 BIS Z-HW-008	BAM0337 BIS Z-HW-009	BAM012M BIS Z-MP-001
Principle of operation	Holding RFID system	Holding RFID system	Holding RFID system	Holding RFID system	Holding RFID system
Use	Holder for installing antennas BIS U-3xx	Fixing for signal converters BIS U-602x	Holder for mounting data carriers BIS M-135/138	Holder for mounting data carriers BIS M-134/137	Metal mounting plate for data carriers BIS M-15x
Material	Stainless steel (1.4571)	Aluminum, black	PPS, black	PPS, black	Stainless steel (1.4310)
Dimension	121 x 57 mm	106 x 43 x 4.6 mm	86 x 39.5 x 63 mm	86 x 39.5 x 63 mm	40 x 0.4 mm
Mounting	Screws	Screws	Screws	Screws	—
Ambient temperature	—	—	-25...240 °C	-25...240 °C	-30...70 °C
Ambient temperature	—	—	-25...240 °C	-25...240 °C	-30...70 °C
Productview	Page 465	Page 465	Page 465	Page 465	Page 465

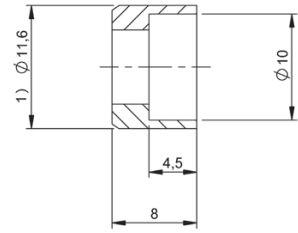


	BAM012N BIS Z-ZA-001	BAM012A BIS C-300-H61	BAM012J BIS Z-HG-002	
Principle of operation	Access protection	Handle	Handle	
Use	Fixing for signal converters BIS U-602x	Socket for read/write heads Ø 14,5 mm	Socket for read/write heads Ø 18 mm	
Material	PA 6.6 black (nut) POM black (holder)	POM black	POM black	
Dimension	Ø 40 x 45 mm	Ø 14.5 x 120 mm	Ø 40 x 125 mm	
Mounting	Thread M30x1.5	—	—	
Ambient temperature	0...70 °C	0...70 °C	0...70 °C	
Ambient temperature	0...70 °C	0...70 °C	0...70 °C	
Productview	Page 466	Page 466	Page 466	



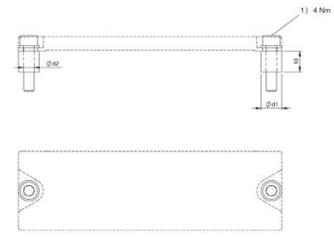
	BAM012K BIS Z-HG-003			
Principle of operation	Handle			
Use	Socket for read/write heads Ø 30 mm			
Material	POM black			
Dimension	Ø 40 x 125 mm			
Mounting	—			
Ambient temperature	0...70 °C			
Ambient temperature	0...70 °C			
Productview	Page 466			

464 | Accessories | Fastening Technology



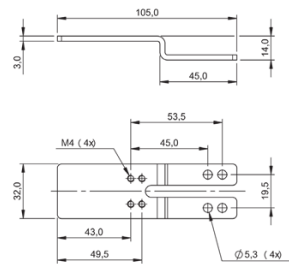
1) see remarks

BAM0127

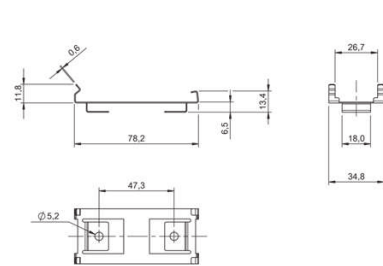


1) Tightening torque

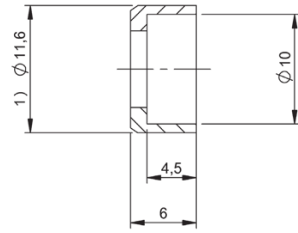
BAM011W



BAM01MY

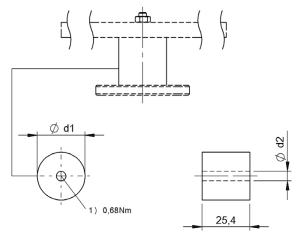


BAM01Y3



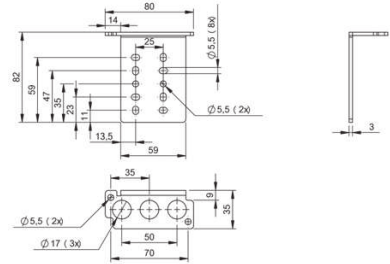
1) see remarks

BAM0128

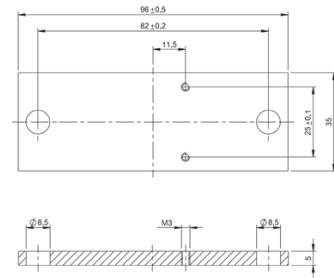


1) Tightening torque

BAM020R

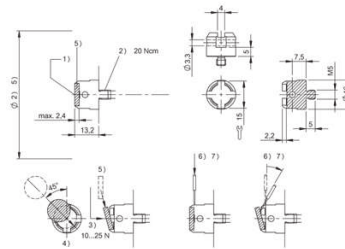


BAM02PN



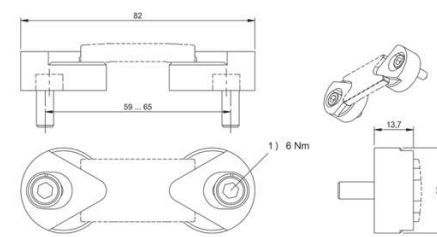
BAM012E

Brackets for RFID systems | 465



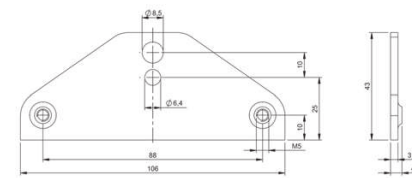
1) Sensing surface, 2) Tightening torque, 3) see remarks, 4) Data carrier installation, 5) Data carrier, 6) Caution: Protect eyes, 7) Replace data carrier

BAM012H

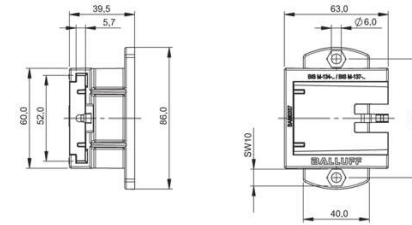


1) Tightening torque

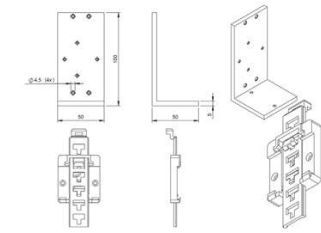
BAM01FT



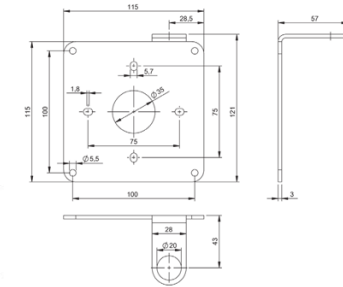
BAM01KN



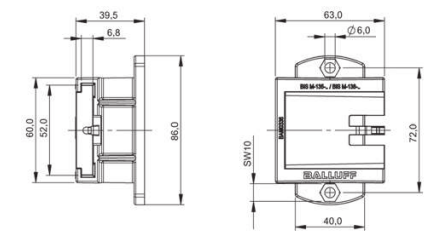
BAM0337



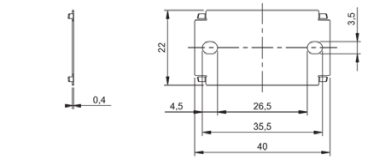
BAM012L



BAM01JK

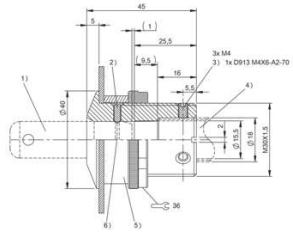


BAM0336



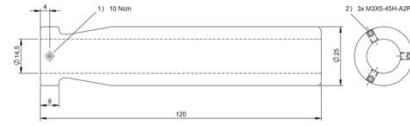
BAM012M

466 | Accessories | Fastening Technology



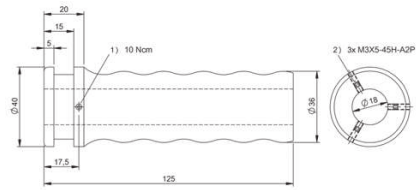
1) Data carrier, 2) Spring-loaded compression piece, 3) Threaded pin, 4) Read/write head, 5) Spacer ring, 6) Notch in data carrier

BAM012H



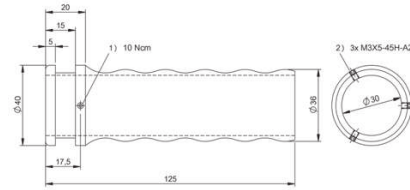
1) Tightening torque, 2) Threaded pin

BAM012A



1) Tightening torque, 2) Threaded pin

BAM012J



1) Tightening torque, 2) Threaded pin

BAM012K



	BAM02NM BAM BD-LG-003-0900	BAM02NN BAM BD-LG-003-1200	BAM02NP BAM BD-LG-003-1650	
Principle of operation	Tilted mirror	Tilted mirror	Tilted mirror	
Use	For floor mount of safety light curtain BLG	For floor mount of safety light curtain BLG	For floor mount of safety light curtain BLG	
Material	Glass painted yellow Steel	Glass painted yellow Steel	Glass painted yellow Steel	
Dimension	880 x 36 x 89 mm	1180 x 36 x 89 mm	1630 x 36 x 89 mm	
Mounting	Screws	Screws	Screws	
Productview	Page 472	Page 472	Page 472	



	BAM02NF BAM MB-LG-024-1000-1	BAM02NH BAM MB-LG-024-1200-1	BAM02NJ BAM MB-LG-024-1650-1	
Principle of operation	Holding Safety Light Curtains	Holding Safety Light Curtains	Holding Safety Light Curtains	
Use	For safety light curtain BLG	For safety light curtain BLG	For safety light curtain BLG	
Material	Steel painted yellow Aluminum	Steel painted yellow Aluminum	Steel painted yellow Aluminum	
Dimension	1018 x 195 x 195 mm	1218 x 195 x 195 mm	1668 x 195 x 195 mm	
Mounting	Screws	Screws	Screws	
Productview	Page 472	Page 473	Page 473	



	BAM02NR BAM BD-LG-003-1900	BAM02N6 BAM IA-XA-017-01	BAM02N7 BAM IA-XA-017-02	BAM02NC BAM MB-LG-023-B13-3	BAM02NE BAM MB-LG-024-0600-1
Principle of operation	Tilted mirror	Accessories Safety Light Curtains	Accessories Safety Light Curtains	Accessories Safety Light Curtains	Holding Safety Light Curtains
Use	For floor mount of safety light curtain BLG	For safety light curtain BLG	For safety light curtain BLG	For safety light curtain BLG	For safety light curtain BLG
Material	Glass painted yellow Steel	Rubber, Shore hardness 57	Rubber, Shore hardness 57	Steel zinc plated	Steel painted yellow Aluminum
Dimension	1880 x 36 x 89 mm	Ø 25 x 20 mm	Ø 25 x 20 mm	35 x 29.7 x 39.6 mm	618 x 195 x 195 mm
Mounting	Screws	Screws	Screws	Screws	Screws
Productview	Page 472	Page 472	Page 472	Page 472	Page 472



	BAM02NK BAM MB-LG-024-1900-1	BAM02N2 BAM MC-LG-036-T01-3	BAM02NZ BAM MC-LG-037-B07-3	BAM02N0 BAM MC-LG-038-B07-01-3	BAM02N1 BAM MC-LG-038-B07-02-3
Principle of operation	Holding Safety Light Curtains	Accessories Safety Light Curtains	Accessories Safety Light Curtains	Accessories Safety Light Curtains	Accessories Safety Light Curtains
Use	For safety light curtain BLG	For safety light curtain BLG	For safety light curtain BLG	For safety light curtain BLG	For safety light curtain BLG
Material	Steel painted yellow Aluminum	Steel zinc plated	Steel zinc plated	Anodized aluminum	Anodized aluminum
Dimension	1918 x 195 x 195 mm	70 x 195 x 41 mm	34.5 x 37.8 x 30.7 mm	34.5 x 195 x 12 mm	34.5 x 195 x 12 mm
Mounting	Screws	Screws, terminals	Screws, terminals	Screws	Clamps
Productview	Page 473	Page 473	Page 473	Page 473	Page 473

Sensors

RFID

Machine Vision and Optical Identification

Human Machine Interfaces

Systems

Safety

Industrial Networking

Power Supply

Connectivity

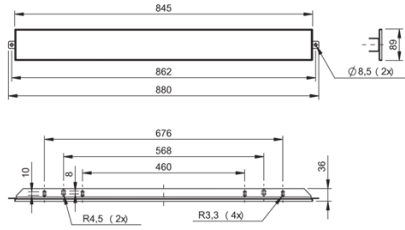
Accessories



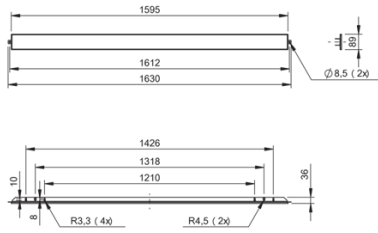
	BAM02N3 BAM MC-LG-040-808-3	BAM02N5 BAM MC-LG-041-807-3-L	BAM02N4 BAM MC-LG-041-807-3-S	
Principle of operation	Accessories Safety Light Curtains	Accessories Safety Light Curtains	Accessories Safety Light Curtains	
Use	For safety light curtain BLG	For safety light curtain BLG	For safety light curtain BLG	
Material	Steel zinc plated	Steel zinc plated	Steel zinc plated	
Dimension	50 x 195 x 195 mm	34.5 x 30 x 26.5 mm	34.5 x 30 x 26.5 mm	
Mounting	Screws	Screws, terminals	Screws, terminals	
Productview	Page 473	Page 473	Page 473	



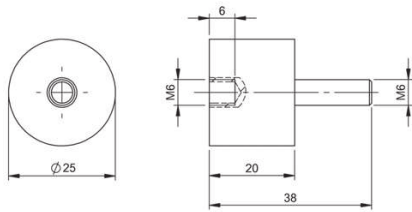
	BAM02P9 BAM TO-LG-011-14	BAM02PA BAM TO-LG-011-30		
	Test rod Safety Light Curtains	Test rod Safety Light Curtains		
	For safety light curtain BLG	For safety light curtain BLG		
	Aluminum anodized, black	Aluminum anodized, black		
	Ø 14 x 300 mm	Ø 30 x 300 mm		
	—	—		
	Page 474	Page 474		



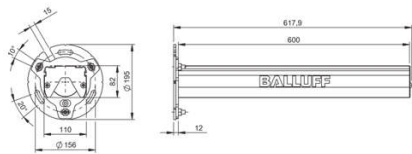
BAM02NM



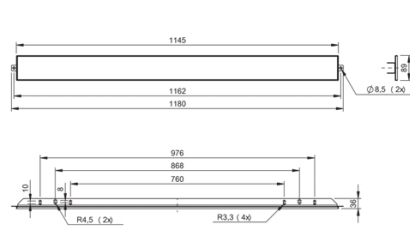
BAM02NP



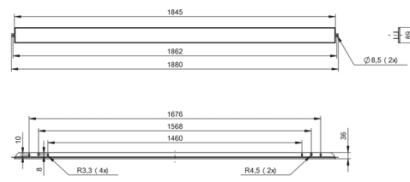
BAM02N6, BAM02N7



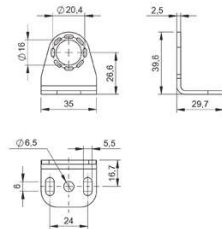
BAM02NE



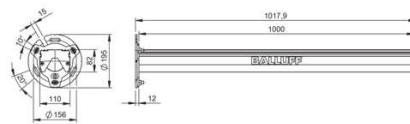
BAM02NH



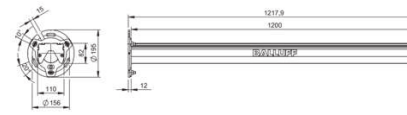
BAM02NR



BAM02NC



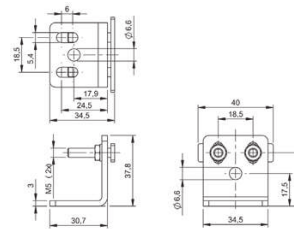
BAM02NF



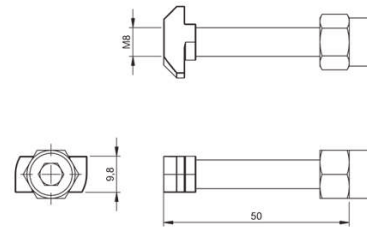
BAM02NH



BAM02NK



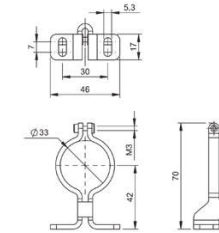
BAM02MZ



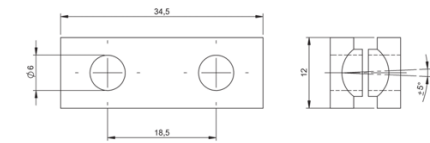
BAM02N3



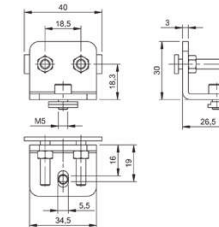
BAM02NJ



BAM02N2



BAM02N0, BAM02N1



BAM02N5, BAM02N4



BAM02P9

BAM02PA



	BAM02HE BAM MB-XA-021-B12-4	BAM02HF BAM MB-XA-022-B12-4	BAM02UY BAM MB-X0-028-B37-3	
Version	Mounting brackets	Mounting brackets	Mounting brackets	
Use	For BLA Light Array	For BLA Light Array	For photoelectric sensors BOD 37M	
Material	Stainless steel (1.4301)	Stainless steel (1.4301)	Steel zinc plated	
Dimension	80 x 78 x 75 mm	80 x 38 x 75 mm	118 x 2.5 x 75 mm	
Mounting	Screws	Screws	Screws	
Productview	Page 482	Page 482	Page 482	



	BAM00RY BOS 18.0-HW-1	BAM00TO BOS 18.0-HW-3	BAM00T2 BOS 18.0-HW-6	
Version	Mounting brackets, 2 adjustable axes	Mounting brackets, 2 adjustable axes	Mounting brackets, 3 adjustable axes	
Use	For photoelectric sensors BOS 18	For photoelectric sensors BOS 11Kfor photoelectric sensors BOS 16Kfor photoelectric sensors BOS 18	For photoelectric sensors BOS 11Kfor photoelectric sensors BOS 16Kfor photoelectric sensors BOS 18	
Material	Steel zinc plated	Steel zinc plated	Steel zinc plated	
Dimension	20 x 35 x 35 mm	25 x 43 x 32 mm	42 x 50 x 50 mm	
Mounting	Screws	Screws	Screws	
Productview	Page 483	Page 483	Page 483	



	BAM00P8 BOD 63-SH-3	BAM037F BMS AD-M-005-D12/X01	BAM037H BMS AD-M-005-D12/X02	BAM037R BMS AD-M-005-D12/X03	BAM00PT BOS 11-HW-1
Version	Mounting brackets, Optical filter	Adjusting unit	Adjusting unit	Adjusting unit	Mounting brackets
Use	For photoelectric sensors BOD 63M	For photoelectric sensors BOS 5Kfor photoelectric sensors BOS 6Kfor photoelectric sensors BOS R020	For photoelectric sensors BOS 21Mfor photoelectric sensors BOS 23Kfor photoelectric sensors BOS Q08	For sensors and fiber optics Ø2for sensors and fiber optics Ø3for sensors and fiber optics Ø4for sensors and fiber optics Ø5for photoelectric sensors BOH Q06for photoelectric sensors BOH R002for photoelectric sensors BOH R010for photoelectric sensors BOH Z001	For photoelectric sensors BOS
Material	Steel zinc plated chrome-plated	Aluminum anodized, natural Nickel-plated brass	Aluminum anodized, natural Nickel-plated brass	Aluminum anodized, natural Nickel-plated brass	Stainless steel
Dimension	35 x 73 x 59 mm	33 x 12.5 x 92 mm	50 x 12.5 x 116 mm	28 x 14.5 x 98 mm	32 x 45.5 x 66.6 mm
Mounting	Screws	Screws, terminals	Screws, terminals	Screws, terminals	Screws
Productview	Page 482	Page 482	Page 482	Page 482	Page 482



	BAM01YW BAM MB-XA-013-Q08-4	BAM00T4 BOS 2-HW-1	BAM00T5 BOS 2-HW-2	BAM00T6 BOS 2-HW-3	BAM00U5 BOS 5-HW-1
Version	Mounting brackets, 2 adjustable axes	Mounting brackets, 3 adjustable axes	Mounting brackets, 2 adjustable axes	Mounting brackets, 2 adjustable axes	Mounting brackets, 2 adjustable axes
Use	For photoelectric sensors BOS Q08M	For photoelectric sensors BOS 2K	For photoelectric sensors BOS 2K	For photoelectric sensors BOS 2K	For photoelectric sensors BOS 5K
Material	Stainless steel (1.4301)	ABS	Steel zinc plated	Steel zinc plated	Stainless steel
Dimension	50 x 14 x 18 mm	17.5 x 25 x 44.7 mm	11 x 17 x 36 mm	11 x 24 x 18 mm	14 x 21.5 x 42.5 mm
Mounting	Screws	Screws	Screws	Screws	Screws
Productview	Page 483	Page 483	Page 483	Page 483	Page 483



	BAM00U6 BOS 5-HW-2	BAM00U7 BOS 5-HW-3	BAM00UF BOS 5-HW-9	
Version	Mounting brackets, 1 adjustable axis	Mounting brackets, 2 adjustable axes	Mounting brackets	
Use	For photoelectric sensors BOS 5K	For photoelectric sensors BOS 5K	For photoelectric sensors BOS 5K	
Material	Stainless steel	Stainless steel	Steel zinc plated	
Dimension	21.5 x 55.2 x 12.7 mm	29 x 56 x 46 mm	29 x 56 x 65 mm	
Mounting	Screws	Screws	Screws	
Productview	Page 484	Page 484	Page 484	



	BAM0304 BMS CS-M-D12-S6K-01	BAM0305 BMS CS-M-D12-S6K-03	BAM00UH BOS 6-HW-1	
Version	Holder	Holder	2 adjustable axes	
Use	For photoelectric sensors BOS 6K	For photoelectric sensors BOS 6K	For photoelectric sensors BOS 6K	
Material	Die-cast zinc	Die-cast zinc Stainless steel (1.4301)	Steel zinc plated	
Dimension	Ø 32 x 16 mm	Ø 32 x 16 mm	14 x 30 x 20 mm	
Mounting	Screws, terminals	Screws, terminals	Screw M3	
Productview	Page 485	Page 485	Page 485	



	BAM0227 BAM MB-X0-014-B10-4-BLS	BAM0228 BAM MB-X0-014-B10-4-RLS	BAM0225 BAM MB-X0-014-B10-4-RRR	BAM022A BAM MC-X0-030-6K-4	BAM0306 BMS CS-M-D12-FX18-02
Version	Mounting brackets	Mounting brackets	Mounting brackets	Mounting brackets	Mounting block
Use	For photoelectric sensors BOS 6K	For photoelectric sensors BOS 6K	For photoelectric sensors BOS 6K	For photoelectric sensors BOS 6K	For holding rods with Ø12 mm for photoelectric sensors BOS 23K
Material	Stainless steel (1.4301)	Stainless steel (1.4301)	Stainless steel (1.4301)	Aluminum anodized	Die-cast zinc
Dimension	76.4 x 16.2 x 30 mm	60 x 16.2 x 47 mm	60 x 33.2 x 32 mm	32 x 16.2 x 16 mm	12 x 24 x 37 mm
Mounting	Screws	Screws	Screws	Screws	Screws, terminals
Productview	Page 484	Page 484	Page 484	Page 484	Page 484



	BAM02ZE BAM MB-X0-032-B16-1-BR2	BAM02ZF BAM MB-X0-032-B16-1-BS1	BAM00T7 BOS 21-AD-1	BAM00T9 BOS 21-HW-1	BAM00TA BOS 21-HW-2
Version	Mounting brackets, 2 adjustable axes	Mounting brackets, 1 adjustable axis	Holder, 1 adjustable axis	Mounting brackets, 2 adjustable axes	Mounting brackets, 2 adjustable axes
Use	For photoelectric sensors BOS 21M	For photoelectric sensors BOS 21M	For photoelectric sensors BOS 25K for photoelectric sensors BOS 26K for photoelectric sensors BOS 21M for BOS R-1 reflectors	For photoelectric sensors BOS 21M	For photoelectric sensors BOS 21M
Material	Naturally anodized aluminum	Naturally anodized aluminum	Aluminum anodized	Steel zinc plated	Steel zinc plated
Dimension	50 x 61 x 40 mm	56 x 89.5 x 23 mm	50 x 48 x 30 mm	20 x 50 x 26.5 mm	25 x 28 x 40 mm
Mounting	Screws	Screws	Screws	Screws	Screws
Productview	Page 485	Page 485	Page 485	Page 485	Page 485



	BAM01FK BAM MB-X0-006-B05-4	BAM01FM BAM MB-X0-007-B05-4	BAM00TK BOS 26-HW-1	
Version	Mounting brackets, 2 adjustable axes	Mounting brackets, 1 adjustable axis	Mounting brackets, 2 adjustable axes	
Use	For photoelectric sensors BOS 23K	For photoelectric sensors BOS 23K	For photoelectric sensors BOS 26K	
Material	Stainless steel	Stainless steel (1.4301)	Steel zinc plated	
Dimension	25 x 40 x 64.5 mm	44.3 x 58 x 65 mm	19 x 48 x 47.6 mm	
Mounting	Screws	Screws	Screws	
Productview	Page 486	Page 486	Page 486	

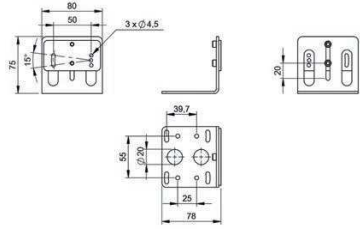


	BAM00U9 BOS 5-HW-5	BAM00UA BOS 5-HW-6	BAM027E BAM MC-X0-034-23K-4	
Version	Mounting brackets, 1 adjustable axis	Mounting brackets, 1 adjustable axis	Adjusting unit	
Use	For BOS R-26 reflectors	For BOS R-9 reflectorsfor BOS R-22 reflectors	For photoelectric sensors BOS 23K	
Material	Steel zinc plated	Steel zinc plated	Stainless steel (1.4301)	
Dimension	20 x 35 x 44.2 mm	20 x 50 x 61 mm	52.5 x 42 x 50 mm	
Mounting	Screws	Screws	Screw M4	
Productview	Page 487	Page 487	Page 487	

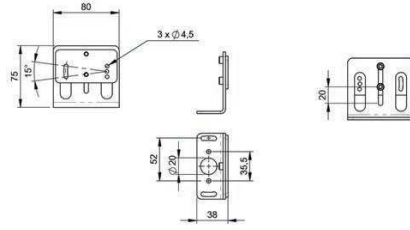


	BAM00P6 BOD 63-HW-1	BAM02KL BMS CS-M-D12-B64K-12	BAM003E BMS AD-M-002-D12/D12	BAM0038 BMS AD-M-002-D12/D18	BAM00U8 BOS 5-HW-4
Version	Mounting brackets, 2 adjustable axes	Mounting brackets	Adjusting unit	Adjusting unit	Mounting brackets, 1 adjustable axis
Use	For photoelectric sensors BOS 63M	For photoelectric sensors BOS 64K	For sensors Ø12 mm	For sensors Ø18 mm	For BOS R-25 reflectorsfor BOS R-10 reflectors
Material	Steel zinc plated	Aluminum anodized	Stainless steel (1.4301)	Stainless steel (1.4301)	Steel zinc plated
Dimension	40 x 94.5 x 114.5 mm	106 x 32 x 96 mm	57 x 45 x 50 mm	57 x 45 x 50 mm	28 x 58 x 113 mm
Mounting	Screw M5	Screws	Screws, terminals	—	Screws
Productview	Page 486	Page 486	Page 486	Page 486	Page 486

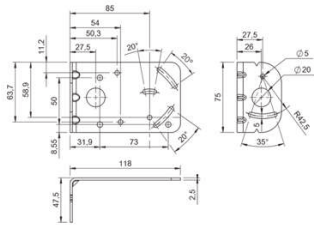
482 | Accessories | Fastening Technology



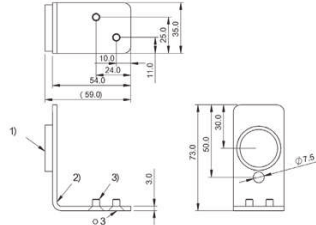
BAM02HE



BAM02HF

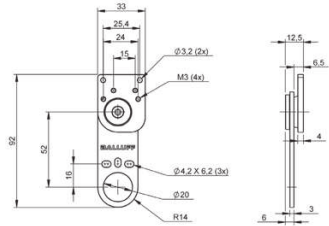


BAM02UY

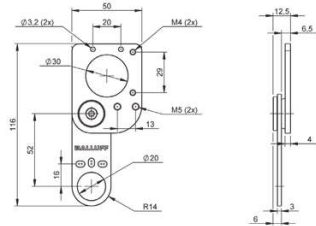


1) Optical filter, 2) Mounting bracket, 3) Screw M5, ISO 10642

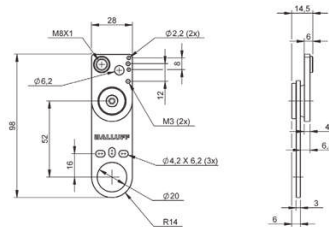
BAM00P8



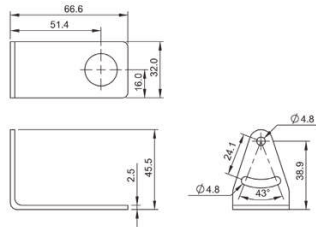
BAM037F



BAM037H

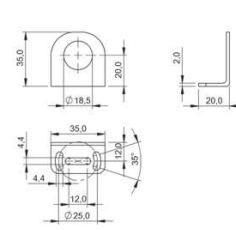


BAM037R

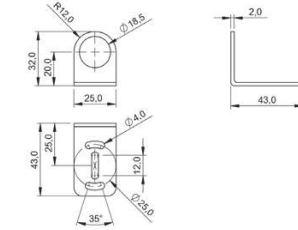


BAM00PT

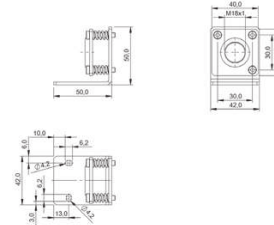
Mounting bracket for photoelectric sensors | 483



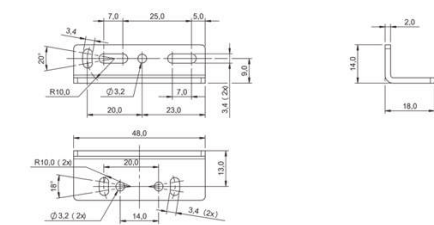
BAM00RY



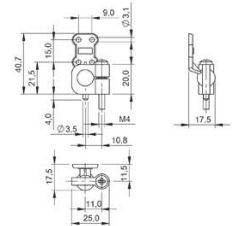
BAM00TO



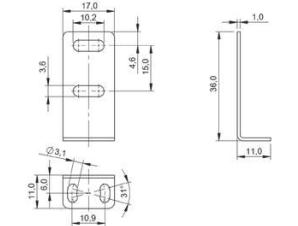
BAM00T2



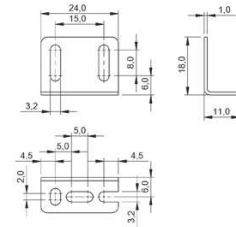
BAM01YW



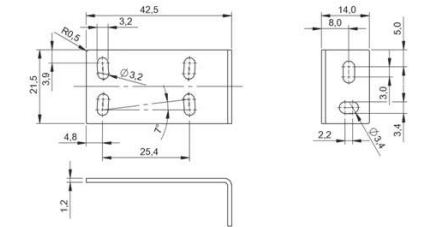
BAM00T4



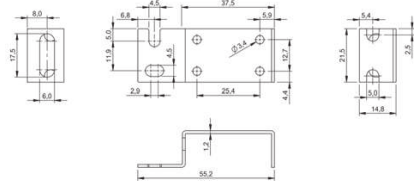
BAM00T5



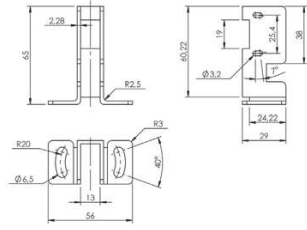
BAM00T6



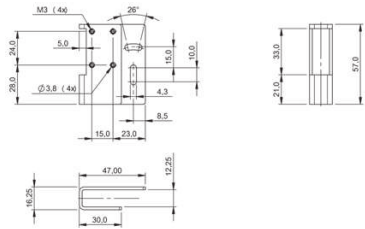
BAM00U5



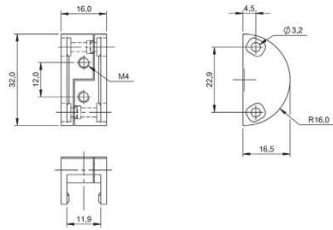
BAM0006



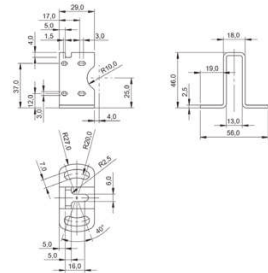
BAM000F



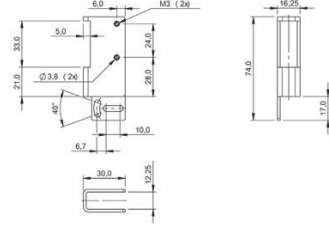
BAM0228



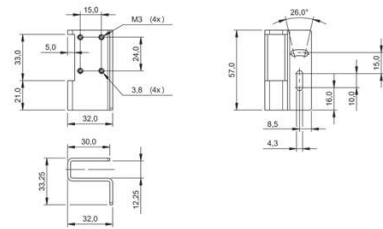
BAM022A



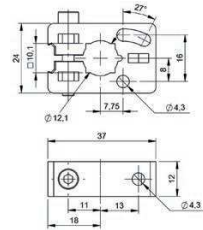
BAM0007



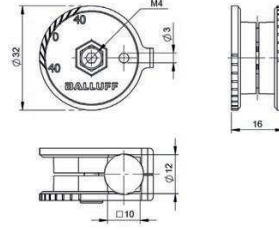
BAM0227



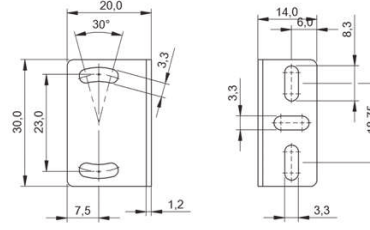
BAM0225



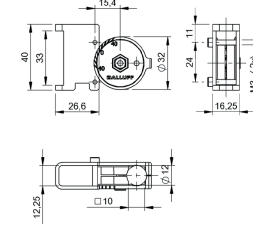
BAM0306



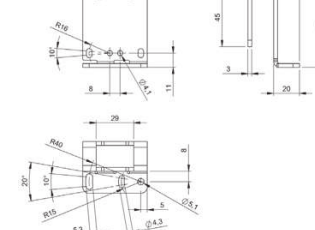
BAM0304



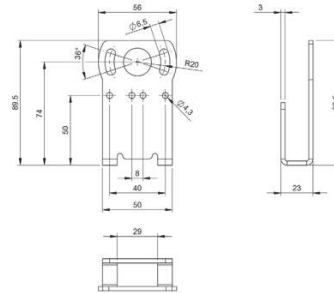
BAM0305



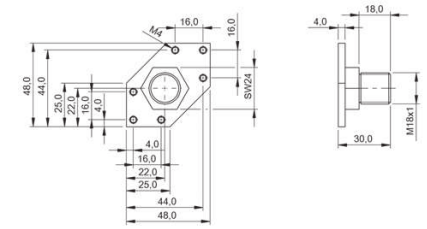
BAM000U



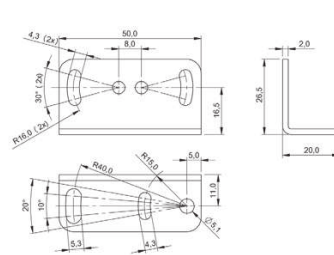
BAM000H



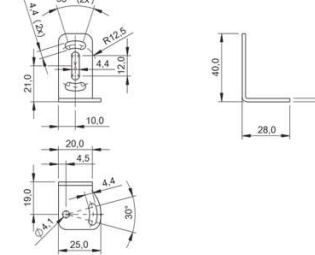
BAM022F



BAM000T

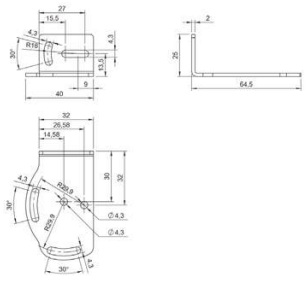


BAM0009

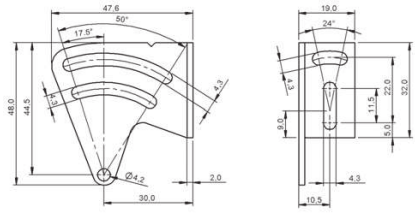


BAM000A

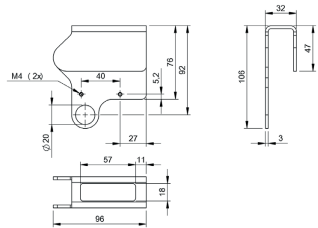
486 | Accessories | Fastening Technology



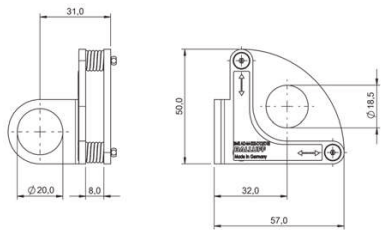
BAM01FK



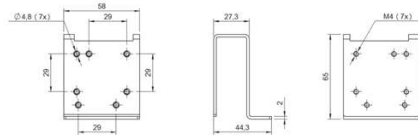
BAM00TK



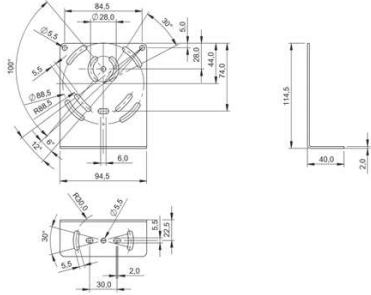
BAM02KL



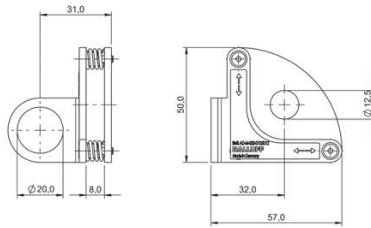
BAM0038



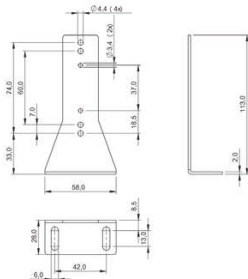
BAM01FM



BAM00P6

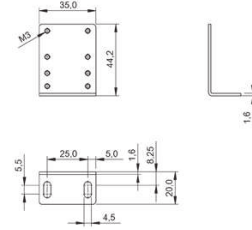


BAM003E

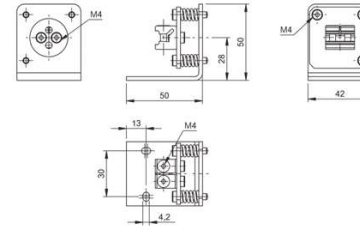


BAM0008

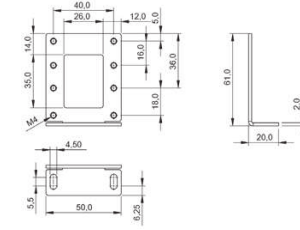
Mounting bracket for photoelectric sensors | 487



BAM0009



BAM027E



BAM0004A



	BAM01K6 BMF 103-HW-100	BAM01K7 BMF 103-HW-102	BAM00K8 BMF 103-HW-41	
Principle of operation	BMF mounting bracket	BMF mounting bracket	BMF mounting bracket	
Application	Pneumatic flat cylinder with integrated groove	Pneumatic flat cylinder with integrated groove	Pneumatic flat cylinder with integrated groove	
Use	for magnetic sensors BMF 103	for magnetic sensors BMF 103	for magnetic sensors BMF 103	
Material	Brass nickel plated	Brass nickel plated	Brass nickel plated	
Ambient temperature	-40...85 °C	-40...85 °C	-40...85 °C	
Productview	Page 500	Page 500	Page 500	



	BAM00KJ BMF 103-HW-75	BAM00KN BMF 103-HW-85	BAM023L BMF 103-HW-85-SA1	
Principle of operation	BMF mounting bracket	BMF mounting bracket	BMF mounting bracket	
Application	Pneumatic cylinder with integrated groove	Pneumatic cylinder with integrated groove	Pneumatic cylinder with integrated groove	
Use	for magnetic sensors BMF 103	for magnetic sensors BMF 103	for magnetic sensors BMF 103	
Material	Aluminum	Aluminum	Aluminum	
Ambient temperature	-40...85 °C	-40...85 °C	-40...85 °C	
Productview	Page 501	Page 501	Page 501	



	BAM00K9 BMF 103-HW-42	BAM00KA BMF 103-HW-43	BAM00KC BMF 103-HW-63	BAM00KF BMF 103-HW-68	BAM00KH BMF 103-HW-74
Principle of operation	BMF mounting bracket	BMF mounting bracket	BMF mounting bracket	BMF mounting bracket	BMF mounting bracket
Application	Pneumatic flat cylinder with integrated groove	Pneumatic flat cylinder with integrated groove	Pneumatic flat cylinder with integrated groove	Pneumatic flat cylinder with integrated groove, Fabco Pancake cylinder	Pneumatic cylinder with tie rods
Use	for magnetic sensors BMF 103	for magnetic sensors BMF 103	for magnetic sensors BMF 103	for magnetic sensors BMF 103	for magnetic sensors BMF 103
Material	Brass nickel plated	Brass nickel plated	Aluminum	Aluminum	Aluminum
Ambient temperature	-40...85 °C	-40...85 °C	-40...85 °C	-40...85 °C	-40...85 °C
Productview	Page 500	Page 500	Page 500	Page 500	Page 500



	BAM00KP BMF 103-HW-87	BAM01E2 BMF 103-HW-93	BAM01K9 BMF 303-HW-101	BAM01K4 BMF 303-HW-103	BAM01K5 BMF 303-HW-104
Principle of operation	BMF mounting bracket	BMF mounting bracket	BMF mounting bracket	BMF mounting bracket	BMF mounting bracket
Application	Pneumatic cylinder with integrated groove	Pneumatic cylinder, round without groove or tie rod, Piston diameter 8 - 80 mm	Pneumatic cylinder with integrated groove	Pneumatic cylinder with integrated groove	Pneumatic cylinder with tie rods, Piston diameter: any
Use	for magnetic sensors BMF 103	for magnetic sensors BMF 103	for magnetic sensors BMF 303	for magnetic sensors BMF 303	for magnetic sensors BMF 303
Material	Aluminum	Aluminum	Aluminum anodized	Brass nickel plated	PBTP GF30
Ambient temperature	-40...85 °C	-40...85 °C	-40...85 °C	-40...85 °C	-40...85 °C
Productview	Page 501	Page 501	Page 501	Page 501	Page 501



	BAM0242 BMF 303-HW-114	BMF00J4 BMF 303-HW-116	BAM00KZ BMF 303-HW-28	
Principle of operation	BMF mounting bracket	BMF mounting bracket	BMF mounting bracket	
Application	Pneumatic cylinder with integrated groove	Pneumatic cylinder with integrated groove	Pneumatic cylinder with integrated groove	
Use	for magnetic sensors BMF 303	for magnetic sensors BMF 303	for magnetic sensors BMF 303	
Material	Aluminum	Aluminum	Brass nickel plated	
Ambient temperature	-40...85 °C	-40...85 °C	-40...85 °C	
Productview	Page 501	Page 502	Page 502	



	BAM00L5 BMF 303-HW-44	BAM00L6 BMF 303-HW-51	BAM00L7 BMF 303-HW-59	
Principle of operation	BMF mounting bracket	BMF mounting bracket	BMF mounting bracket	
Application	Dovetail groove 60° (e.g., Festo, Bosch, Numatics and Hoerbiger- Origa) or 90° (e.g. Martonair), Pneumatic cylinder with integrated groove	Pneumatic cylinder with integrated groove, Holder suitable for 2 T slot dimension.	Pneumatic cylinder, round without groove or tie rod, Piston diameter 8 - 80 mm	
Use	for magnetic sensors BMF 303	for magnetic sensors BMF 303	for magnetic sensors BMF 303	
Material	Aluminum anodized	Aluminum anodized	Aluminum	
Ambient temperature	-40...85 °C	-40...85 °C	-40...85 °C	
Productview	Page 502	Page 503	Page 503	



	BAM00L0 BMF 303-HW-30	BAM00L1 BMF 303-HW-31	BAM00L2 BMF 303-HW-33	BAM00L3 BMF 303-HW-34	BAM00L4 BMF 303-HW-40
Principle of operation	BMF mounting bracket	BMF mounting bracket	BMF mounting bracket	BMF mounting bracket	BMF mounting bracket
Application	Pneumatic cylinder with integrated groove	Pneumatic cylinder with integrated groove	Pneumatic cylinder with integrated groove	Pneumatic cylinder, round without groove or tie rod, Piston diameter ≤8 - 80 mm	Pneumatic cylinder with integrated groove
Use	for magnetic sensors BMF 303	for magnetic sensors BMF 303	for magnetic sensors BMF 303	for magnetic sensors BMF 303	for magnetic sensors BMF 303
Material	Brass nickel plated	Nickel silver	Aluminum	Brass nickel plated	Brass nickel plated
Ambient temperature	-40...85 °C	-40...85 °C	-40...85 °C	-40...85 °C	-40...85 °C
Productview	Page 502	Page 502	Page 502	Page 502	Page 502



	BAM00L8 BMF 303-HW-60	BAM00L9 BMF 303-HW-61	BAM00Lc BMF 303-HW-66	BAM00LE BMF 303-HW-69	BAM00LF BMF 303-HW-80
Principle of operation	BMF mounting bracket	BMF mounting bracket	BMF mounting bracket	BMF mounting bracket	BMF mounting bracket
Application	Pneumatic cylinder with integrated groove, Used with BMF 303-HW-51, Holder suitable for 2 T slot dimension.	SMC round cylinders, Pneumatic cylinder, round without groove or tie rod, Piston diameter 8 - 80 mm	Pneumatic cylinder with integrated groove	Pneumatic cylinder with integrated groove, Fabco Pancake cylinder	Pneumatic cylinder with integrated mounting rail
Use	for magnetic sensors BMF 303	for magnetic sensors BMF 303	for magnetic sensors BMF 303	for magnetic sensors BMF 303	for magnetic sensors BMF 303
Material	Aluminum	Aluminum	Aluminum	Aluminum	Aluminum anodized
Ambient temperature	-40...85 °C	-40...85 °C	-40...85 °C	-40...85 °C	-40...85 °C
Productview	Page 503	Page 503	Page 503	Page 503	Page 503



	BAM01F0 BMF 303-HW-97	BAM01K8 BMF 305-HW-106	BAM00LH BMF 305-HW-17	
Principle of operation	BMF mounting bracket	BMF mounting bracket	BMF mounting bracket	
Application	Pneumatic cylinder with integrated groove	Pneumatic cylinder with integrated groove	Pneumatic cylinder with integrated groove	
Use	for magnetic sensors BMF 303	for magnetic sensors BMF 305	for magnetic sensors BMF 305	
Material	Brass nickel plated	Aluminum anodized	Brass nickel plated	
Ambient temperature	-40...85 °C	-40...85 °C	-40...85 °C	
Productview	Page 503	Page 504	Page 504	



	BAM02YK BMF 305-HW-23-SA2	BAM00LP BMF 305-HW-24	BAM00LR BMF 305-HW-25	
Principle of operation	BMF mounting bracket	BMF mounting bracket	BMF mounting bracket	
Application	Pneumatic cylinder with integrated groove	Pneumatic cylinder, round without groove or tie rod, Piston diameter ≤8 - 80 mm	Dovetail groove 60° (e.g., Festo, Bosch, Numatics and Hoerbiger- Origal) or 90° (e.g. Martonair), Pneumatic cylinder with integrated groove	
Use	for magnetic sensors BMF 305	for magnetic sensors BMF 305	for magnetic sensors BMF 305	
Material	Aluminum nickel plated	Brass nickel plated	Aluminum anodized	
Ambient temperature	-40...85 °C	-40...85 °C	-40...85 °C	
Productview	Page 504	Page 504	Page 505	



	BAM00LJ BMF 305-HW-20	BAM00LK BMF 305-HW-20-SA1	BAM00LL BMF 305-HW-21	BAM00LM BMF 305-HW-22	BAM00LN BMF 305-HW-23
Principle of operation	BMF mounting bracket	BMF mounting bracket	BMF mounting bracket	BMF mounting bracket	BMF mounting bracket
Application	Pneumatic cylinder with integrated groove	Pneumatic cylinder with integrated groove	With BMF 21-HW -8 mounting bracket for pneumatic cylinder with tie rod diameter 4.3...6.5 mm., With BMF 21-HW -11 mounting bracket for cylinder with piston diameter 8-80 mm. Mounting with tube cuff., With BMF 21-HW -10 mounting bracket for pneumatic cylinder with tie rod Ø 4.3...17 mm and pneumatic cylinder with integrated tie rod (profile), profile width 10...17 mm.	Pneumatic cylinder with integrated groove	Pneumatic cylinder with integrated groove
Use	for magnetic sensors BMF 305	for magnetic sensors BMF 305	for magnetic sensors BMF 305	for magnetic sensors BMF 305	for magnetic sensors BMF 305
Material	Brass nickel plated	Brass nickel plated	PBTP GF30	Brass nickel plated	Aluminum anodized
Ambient temperature	-40...85 °C	-40...85 °C	-25...70 °C	-40...85 °C	-40...85 °C
Productview	Page 504	Page 504	Page 504	Page 504	Page 504



	BAM00LT BMF 305-HW-26	BAM00LU BMF 305-HW-27	BAM00LW BMF 305-HW-32	BAM00LY BMF 305-HW-35	BAM00LZ BMF 305-HW-36
Principle of operation	BMF mounting bracket	BMF mounting bracket	BMF mounting bracket	BMF mounting bracket	BMF mounting bracket
Application	Pneumatic cylinder with integrated groove. Used with BMF 303-HW-51, Holder suitable for 2 T slot dimension., For slot dimensions see drawing	Pneumatic cylinder with integrated mounting rail	Pneumatic cylinder with integrated groove	Pneumatic cylinder with integrated groove	Pneumatic cylinder with integrated groove
Use	for magnetic sensors BMF 305	for magnetic sensors BMF 305	for magnetic sensors BMF 305	for magnetic sensors BMF 305	for magnetic sensors BMF 305
Material	Aluminum anodized	Aluminum anodized	Aluminum anodized	Aluminum anodized, black	Aluminum
Ambient temperature	-40...85 °C	-40...85 °C	-40...85 °C	-40...85 °C	-40...85 °C
Productview	Page 505	Page 505	Page 505	Page 505	Page 505



	BAM0000 BMF 305-HW-37	BAM0003 BMF 305-HW-46	BAM0005 BMF 305-HW-50	
Principle of operation	BMF mounting bracket	BMF mounting bracket	BMF mounting bracket	
Application	Pneumatic cylinder with integrated groove, Parker SST and ER Series	Pneumatic cylinder with integrated groove	Pneumatic cylinder with integrated groove	
Use	for magnetic sensors BMF 305	for magnetic sensors BMF 305	for magnetic sensors BMF 305	
Material	Aluminum	Aluminum	Aluminum anodized	
Ambient temperature	-40...85 °C	-40...85 °C	-40...85 °C	
Productview	Page 505	Page 505	Page 506	



	BAM000F BMF 305-HW-72	BAM000K BMF 305-HW-82	BAM0017 BMF 305-HW-91	
Principle of operation	BMF mounting bracket	BMF mounting bracket	BMF mounting bracket	
Application	Pneumatic cylinder with tie rods, Cylinder diameter 5.0" to 8.0"	Pneumatic cylinder with integrated groove	Pneumatic cylinder with integrated groove, Parker 3MA, 4MA	
Use	for magnetic sensors BMF 305	for magnetic sensors BMF 305	for magnetic sensors BMF 305	
Material	Aluminum	Aluminum	Aluminum	
Ambient temperature	-40...85 °C	-40...85 °C	-40...85 °C	
Productview	Page 506	Page 506	Page 507	



	BAM0006 BMF 305-HW-52	BAM0007 BMF 305-HW-53	BAM0009 BMF 305-HW-64	BAM000C BMF 305-HW-70	BAM000E BMF 305-HW-71
Principle of operation	BMF mounting bracket	BMF mounting bracket	BMF mounting bracket	BMF mounting bracket	BMF mounting bracket
Application	Pneumatic cylinder with integrated groove, SMC T-Rail cylinder	Pneumatic cylinder with integrated groove	Pneumatic cylinder with integrated groove, Man-nemann-Rexroth green Series	Pneumatic cylinder with tie rods, Cylinder diameter 1.5" to 2.5"	Pneumatic cylinder with tie rods, Cylinder diameter 3.25" to 4.0"
Use	for magnetic sensors BMF 305	for magnetic sensors BMF 305	for magnetic sensors BMF 305	for magnetic sensors BMF 305	for magnetic sensors BMF 305
Material	Aluminum anodized, black	Aluminum	Aluminum anodized	Aluminum	Aluminum
Ambient temperature	-40...85 °C	-40...85 °C	-40...85 °C	-40...85 °C	-40...85 °C
Productview	Page 506	Page 506	Page 506	Page 506	Page 506



	BAM001C4 BMF 305-HW-92	BAM001EZ BMF 305-HW-98	BAM001EY BMF 305-HW-99	BAM000KT BMF 21-HW-10	BAM000KU BMF 21-HW-10-E
Principle of operation	BMF mounting bracket	BMF mounting bracket	BMF mounting bracket	BMF mounting bracket	BMF mounting bracket
Application	Pneumatic cylinder with integrated groove	Pneumatic cylinder with integrated groove	Pneumatic cylinder with integrated groove, Holder suitable for 2 T slot dimension.	Piston diameter: any, Pneumatic cylinder with integrated tie rods (profile), Pneumatic cylinder with tie rods	Piston diameter: any, Pneumatic cylinder with integrated tie rods (profile), Pneumatic cylinder with tie rods
Use	for magnetic sensors BMF 305	for magnetic sensors BMF 305	for magnetic sensors BMF 305	for magnetic sensors BMF 21	for magnetic sensors BMF 21
Material	Aluminum anodized	Brass nickel plated	Aluminum anodized	Aluminum anodized, black	Stainless steel (1.4305)
Ambient temperature	-40...85 °C	-40...85 °C	-40...85 °C	-40...85 °C	-40...85 °C
Productview	Page 507	Page 507	Page 507	Page 507	Page 507



	BAM00KW BMF 21-HW-11	BAM00KY BMF 21-HW-8	BAM00MR BMF 32-HW-12	
Principle of operation	BMF mounting bracket	BMF mounting bracket	BMF mounting bracket	
Application	Pneumatic cylinder, round without groove or tie rod, Piston diameter 8 - 80 mm	Pneumatic cylinder with tie rods, Pneumatic cylinder with DUO rail	Cylinder model EURO-MEC, all piston diameters, Pneumatic cylinder with integrated mounting rail	
Use	for magnetic sensors BMF 21	for magnetic sensors BMF 21	for magnetic sensors BMF 32	
Material	Aluminum anodized, black	Cast aluminum anodized, black	Aluminum Stainless steel anodized, black	
Ambient temperature	-40...85 °C	-40...85 °C	-40...85 °C	
Productview	Page 507	Page 507	Page 507	



	BAM00NO BMF 32-HW-49	BAM02ZP BAM MC-MF-046-203-A-C	BAM02ZR BAM MC-MF-046-203-A-S	
Principle of operation	BMF mounting bracket	BMF mounting bracket	BMF mounting bracket	
Application	Pneumatic cylinder with tie rods, Piston diameter 3/4", 1", 1 1/8"	Holder for C-slot	Holder for cable tie mount	
Use	for magnetic sensors BMF 32	for fixing the Teachbox BMF 203 in C-slot	for fixing the Teachbox BMF 203 with cable tie	
Material	Aluminum anodized, black	PA 12	PA 12	
Ambient temperature	-40...85 °C	-25...80 °C	-25...80 °C	
Productview	Page 508	Page 508	Page 508	



	BAM00MT BMF 32-HW-13	BAM00MU BMF 32-HW-14	BAM00MW BMF 32-HW-15	BAM00MY BMF 32-HW-16	BAM00MZ BMF 32-HW-18
Principle of operation	BMF mounting bracket	BMF mounting bracket	BMF mounting bracket	BMF mounting bracket	BMF mounting bracket
Application	Pneumatic cylinder with tie rods, Piston diameter: any	Pneumatic cylinder with integrated mounting rail, Bosch Type 0 822 350 / 351 / 352 / 353 / 354 / 355	Piston diameter: any, Pneumatic cylinder with integrated tie rod (profile): profile width: 4...17 mm, Pneumatic cylinder with tie rods	Pneumatic cylinder with tie rods, Pneumatic cylinder with DUO rail, Piston diameter: any	Rexroth/Mecman Series 2700 D 12-100 mm, Pneumatic cylinder with integrated mounting rail
Use	for magnetic sensors BMF 32	for magnetic sensors BMF 32	for magnetic sensors BMF 32	for magnetic sensors BMF 32	for magnetic sensors BMF 32
Material	Aluminum anodized, black	Aluminum anodized, black	Aluminum anodized, black	Aluminum anodized, black	Aluminum anodized, black
Ambient temperature	-40...85 °C	-40...85 °C	-40...85 °C	-40...85 °C	-40...85 °C
Productview	Page 508	Page 508	Page 508	Page 508	Page 508



	BAM02ZT BAM MC-MF-046-203-A-T	BAM01M9 BMF 235-HW-109	BAM01MA BMF 235-HW-110	BAM01MC BMF 235-HW-111	BAM01Y9 BMF 307-HW-112
Principle of operation	BMF mounting bracket	BMF mounting bracket	BMF mounting bracket	BMF mounting bracket	BMF mounting bracket
Application	Holder for T-slot	Pneumatic cylinder with tie rods, Piston diameter: any	Pneumatic cylinder with tie rods, Piston diameter: any	Pneumatic cylinder with tie rods, Piston diameter: any	Pneumatic cylinder, round without groove or tie rod, Piston diameter ≤8 - 110 mm
Use	for fixing the Teachbox BMF 203 in T-slot	for magnetic sensors BMF 235	for magnetic sensors BMF 235	for magnetic sensors BMF 235	for magnetic sensors BMF 307, for magnetic sensors BMF 235
Material	PA 12	Aluminum	Aluminum	Aluminum	Aluminum
Ambient temperature	-25...80 °C	—	—	—	-40...85 °C
Productview	Page 509	Page 509	Page 509	Page 509	Page 509

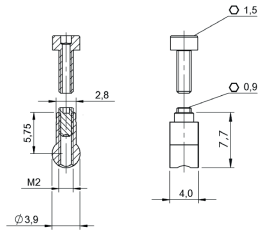


	BAM02W1 BMF 307-HW-73-Z-115	BAM02W2 BMF 307-HW-73-Z-255	BAM00MP BMF 307-HW-86	
Principle of operation	BMF mounting bracket	BMF mounting bracket	BMF mounting bracket	
Application	Pneumatic cylinder, round without groove or tie rod, Piston diameter 8 - 25 mm, For BMF 307 and BMF 315	Pneumatic cylinder, round without groove or tie rod, Piston diameter 25 - 63 mm, For BMF 307 and BMF 315	Pneumatic cylinder with tie rods	
Use	for magnetic sensors BMF 307	for magnetic sensors BMF 307	for magnetic sensors BMF 307	
Material	Stainless steel Die-cast zinc	Stainless steel Die-cast zinc	Plastic Stainless steel	
Ambient temperature	-30...80 °C	-30...80 °C	-25...70 °C	
Productview	Page 509	Page 509	Page 509	

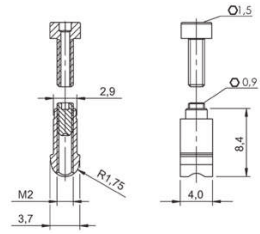
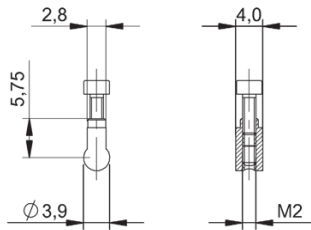


	BAM00KR BMF 10E-HW-19			
	BMF mounting bracket			
	Pneumatic cylinder, round without groove or tie rod, Piston diameter 8 - 63 mm			
	for magnetic sensors BMF 10E			
	Stainless steel (1.4305)			
	-40...85 °C			
	Page 509			

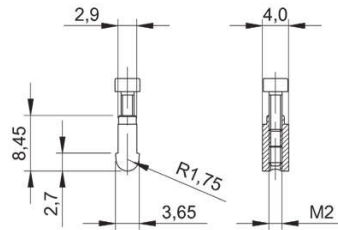
500 | Accessories | Fastening Technology



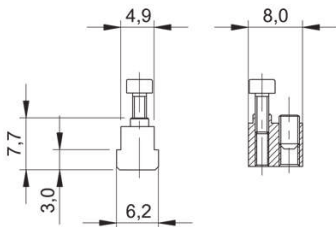
BAM01K6



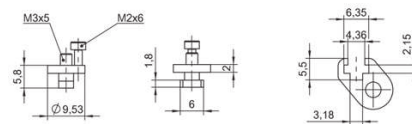
BAM01K7



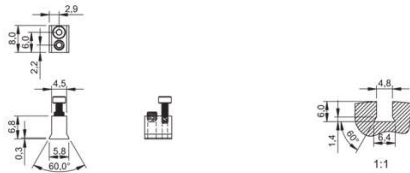
BAM00K8



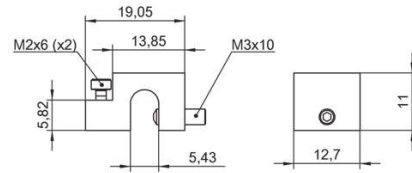
BAM00K9



BAM00KA



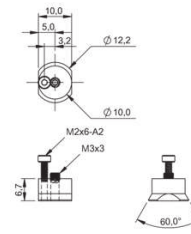
BAM00KC



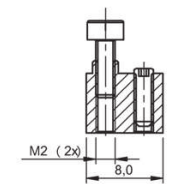
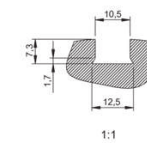
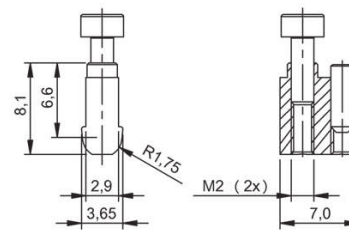
BAM00KF

BAM00KH

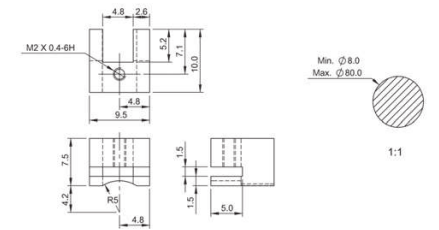
Mounting brackets for magnetic sensors | 501



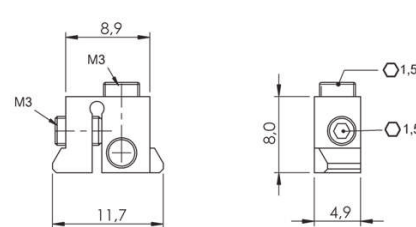
BAM00KJ



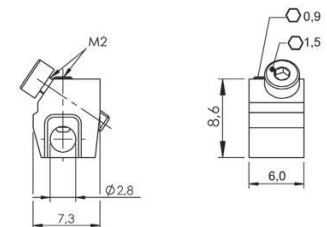
BAM00KN, BAM023L



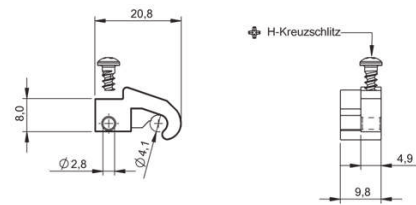
BAM00KP



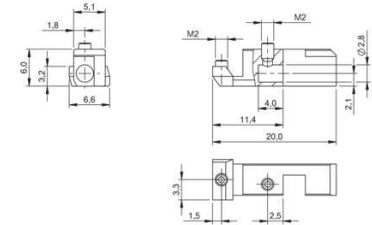
BAM01E2



BAM01K9

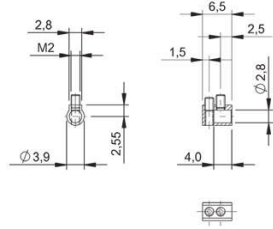
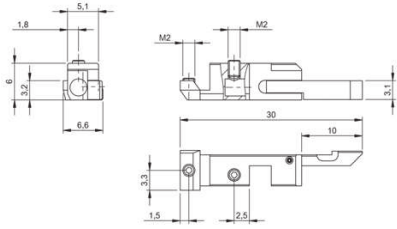


BAM01K4



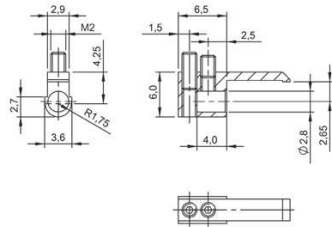
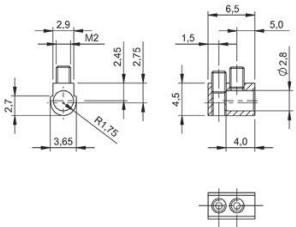
BAM01K5

BAM0242



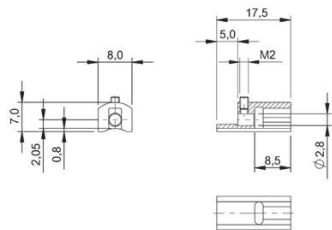
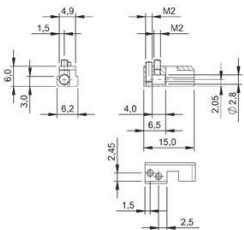
BAM00J4

BAM00KZ



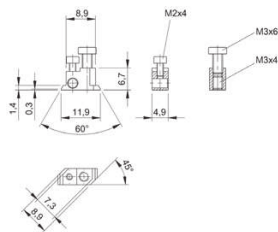
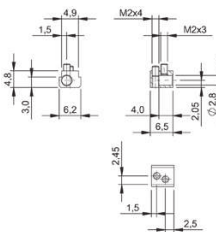
BAM00L0

BAM00L1



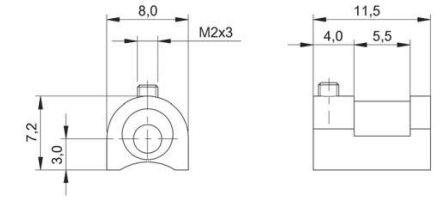
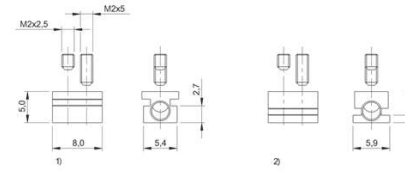
BAM00L2

BAM00L3



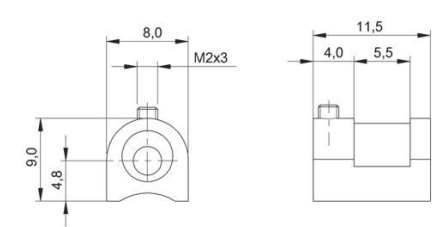
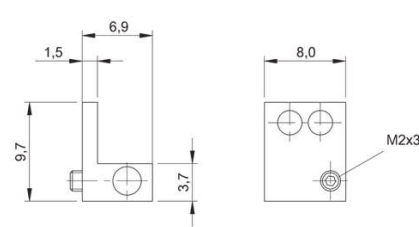
BAM00L4

BAM00L5



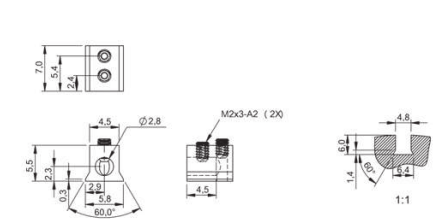
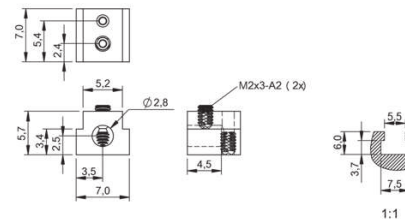
BAM00L6

BAM00L7



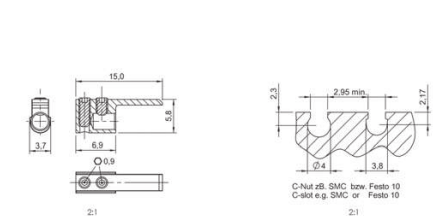
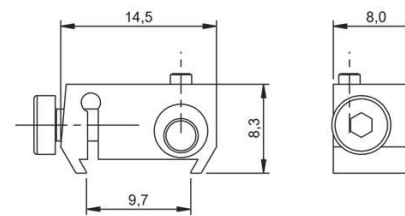
BAM00L8

BAM00L9



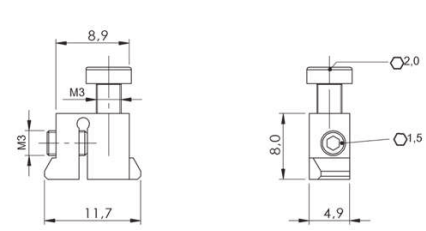
BAM00LC

BAM00LE

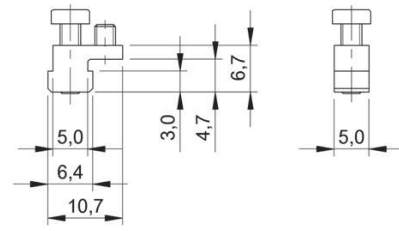


BAM00LF

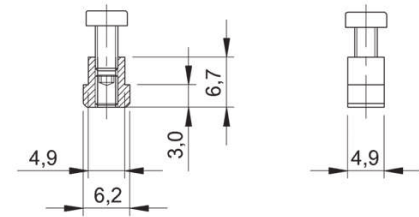
BAM01F0



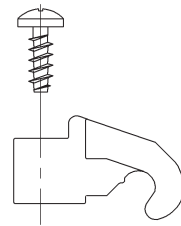
BAM01K8



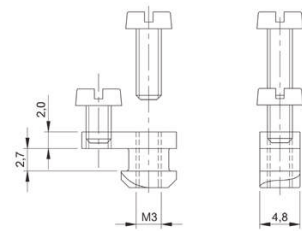
BAM00LH



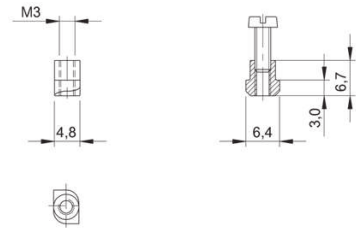
BAM00LJ, BAM00LK



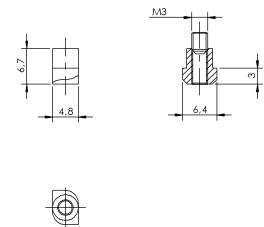
BAM00LL



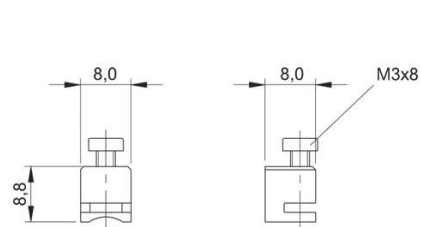
BAM00LM



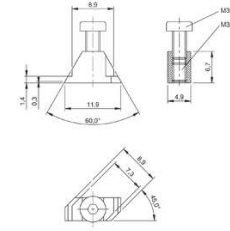
BAM00LN



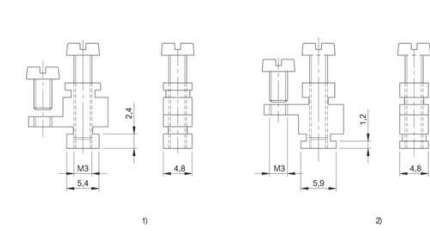
BAM02YK



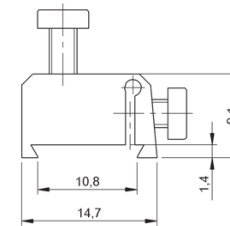
BAM00LP



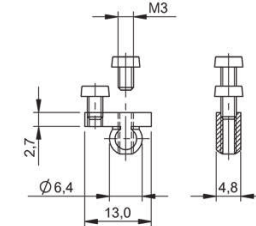
BAM00LR



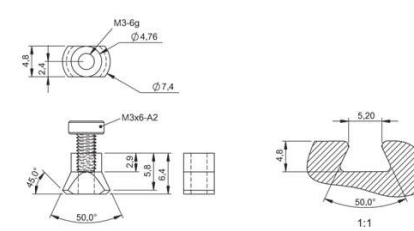
BAM00LT



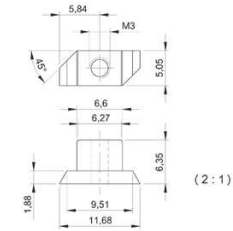
BAM00LU



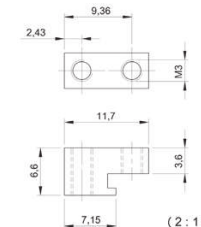
BAM00LW



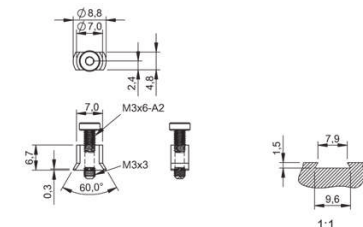
BAM00LY



BAM00LZ

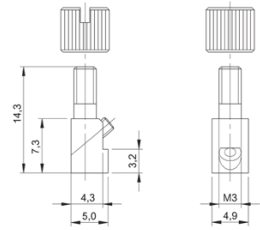


BAM00MO

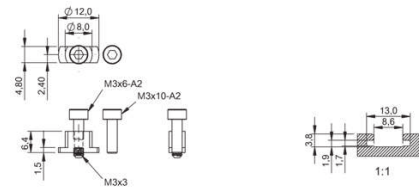


BAM00M3

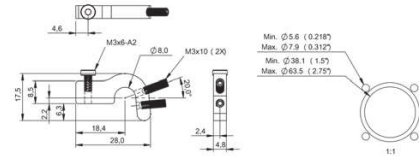
506 | Accessories | Fastening Technology



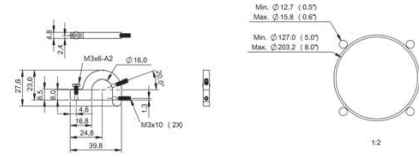
BAM00M5



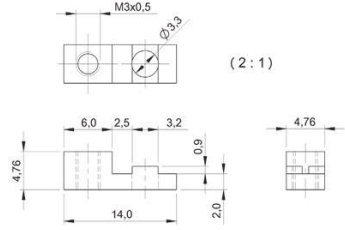
BAM00M7



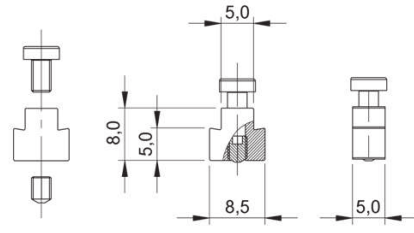
BAM00MC



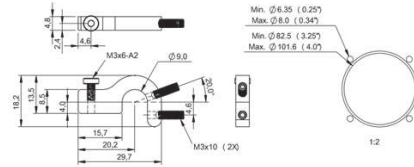
BAM00MF



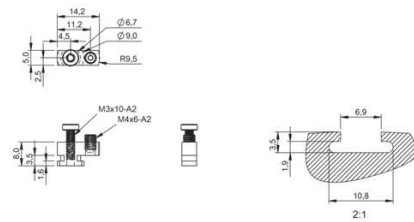
BAM00M6



BAM00M9

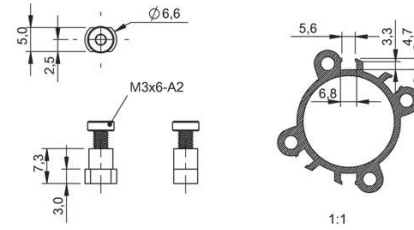


BAM00ME

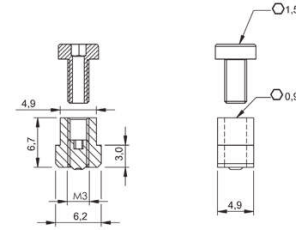


BAM00MK

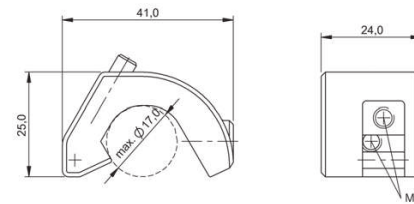
Mounting brackets for magnetic sensors | 507



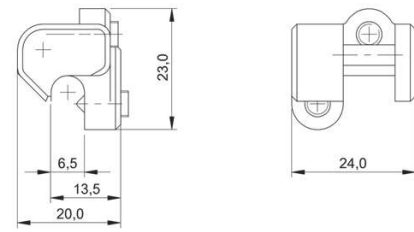
BAM0017



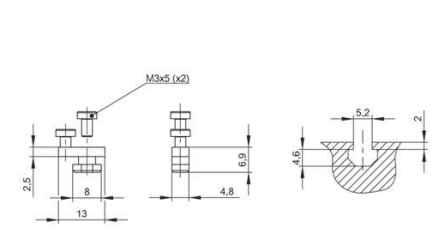
BAM01EZ



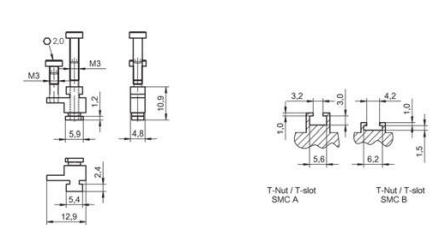
BAM00KT, BAM00KU



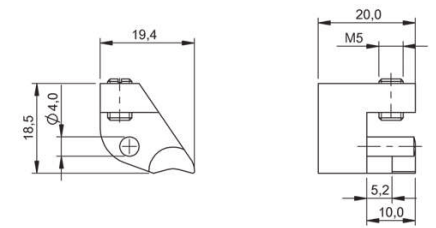
BAM00KY



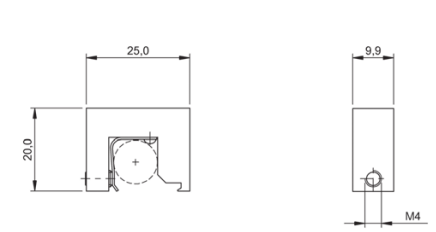
BAM01C4



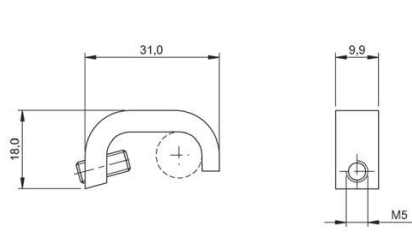
BAM01EY



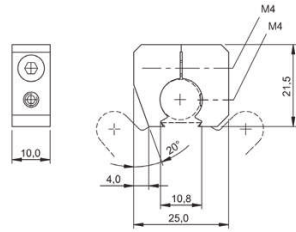
BAM00KW



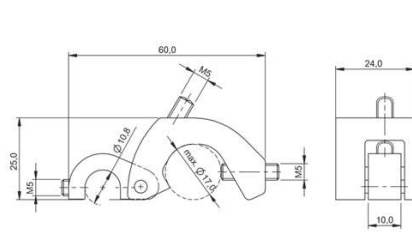
BAM00MR



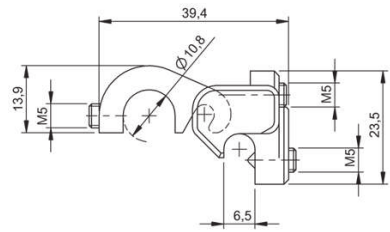
BAM00MT



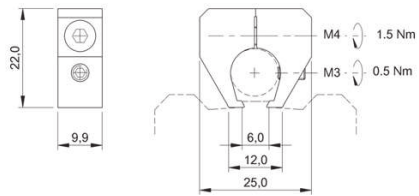
BAM00MU



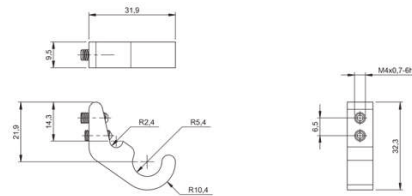
BAM00MW



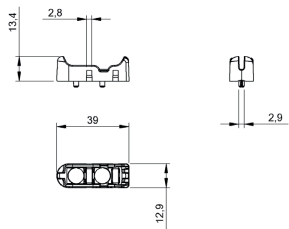
BAM00MY



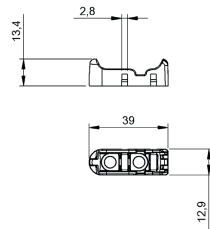
BAM00MZ



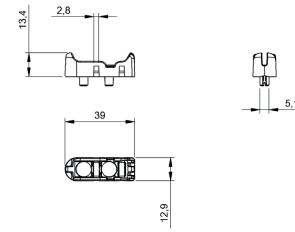
BAM00ND



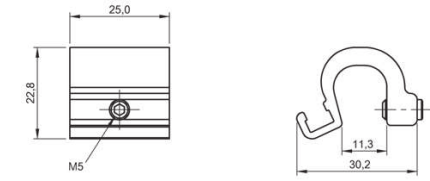
BAM02ZP



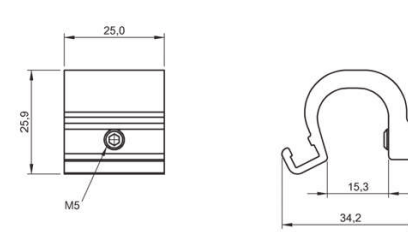
BAM02ZR



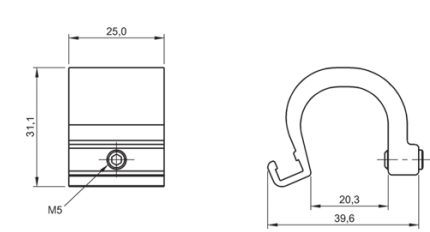
BAM02ZT



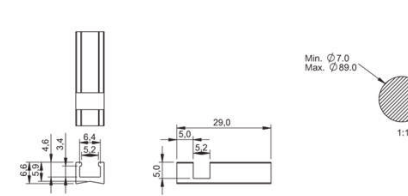
BAM01M9



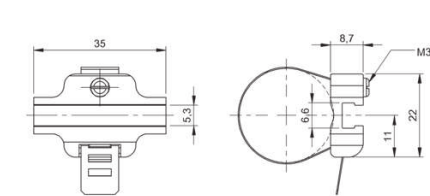
BAM01MA



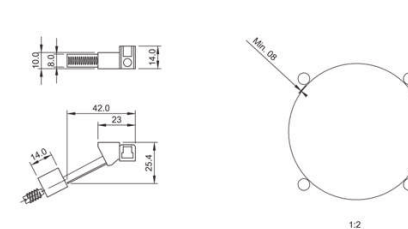
BAM01MC



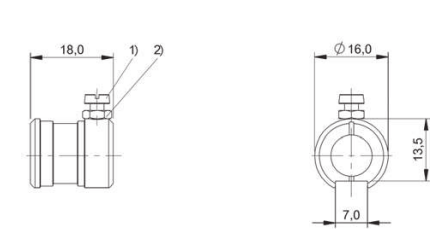
BAM01Y9



BAM02W1, BAM02W2



BAM00MP



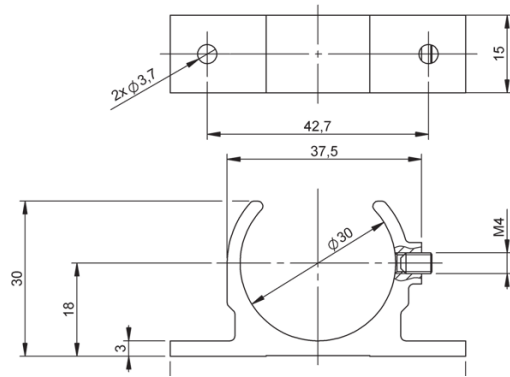
BAM00KR



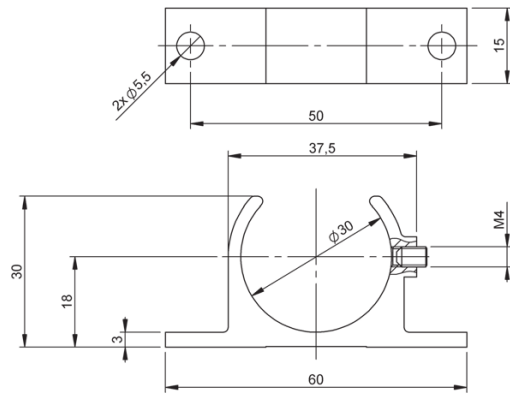
	BAM010W BTL6-A-MF01-A-43	
Principle of operation	BTL control arm	
Material	Aluminum anodized	
Mounting	Through-hole 3.7 mm (2x)	
Productview	Page 512	



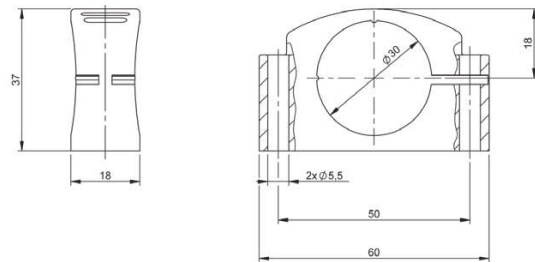
	BAM010Y BTL6-A-MF01-A-50	BAM0110 BTL6-A-MF03-K-50	BAM01N3 BTL6-A-MF07-A-PF/M5
Principle of operation	BTL control arm	BTL control arm	BTL control arm
Material	Aluminum anodized	PA anodized	Aluminum anodized
Mounting	Through-hole 5.5 mm (2x)	Through-hole 5.5 mm (2x)	2x cylinder head screw ISO 4762 M5x25
Productview	Page 512	Page 512	Page 513



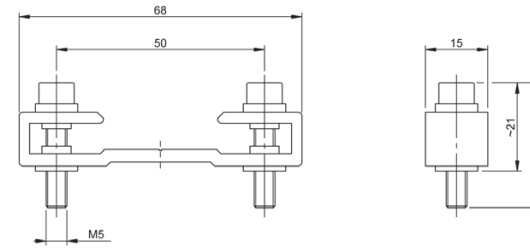
BAM010W



BAM010Y



BAM0110



BAM01N3



	BAM009K BES 08-DM-1	BAM01WF BAM MC-XA-021-M5-4	BAM01WR BAM MC-XA-021-M8-3	
Principle of operation	Sealing element	General installation accessories	General installation accessories	
Use	For sealing of pressure rated sensors M8	For M05 sensors	For M08 sensors	
Material	PA phosphated	Stainless steel	Galvanized steel	
Ambient temperature	-40...110 °C	—	—	
Productview	Page 516	Page 516	Page 516	



	BAM01WJ BAM MC-XA-021-M18-4	BAM01WL BAM MC-XA-021-M18-A	BAM01W5 BAM MC-XA-021-M30-2	
Principle of operation	General installation accessories	General installation accessories	General installation accessories	
Use	For M18 sensors	For M18 sensors	For M30 sensors	
Material	Stainless steel	PA	Brass nickel plated	
Ambient temperature	—	-30...85 °C	—	
Productview	Page 516	Page 516	Page 516	



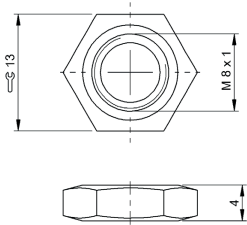
	BAM033A BAM MC-XA-021-M8-4-01	BAM01W3 BAM MC-XA-021-M12-2	BAM01WH BAM MC-XA-021-M12-4	BAM01W6 BAM MC-XA-021-M16-2	BAM01W4 BAM MC-XA-021-M18-2
Principle of operation	General installation accessories	General installation accessories	General installation accessories	General installation accessories	General installation accessories
Use	For M08 sensors	For M12 sensors	For M12 sensors	For M16 sensors	For M18 sensors
Material	Steel -	Brass nickel plated	Stainless steel	Galvanized brass	Brass nickel plated
Ambient temperature	—	—	—	—	—
Productview	Page 516	Page 516	Page 516	Page 516	Page 516



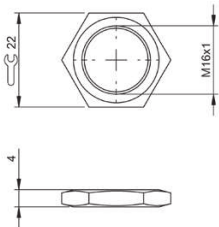
	BAM01WK BAM MC-XA-021-M30-4	BAM01WM BAM MC-XA-021-M30-A		
Principle of operation	General installation accessories	General installation accessories		
Use	For M30 sensors	For M30 sensors		
Material	Stainless steel	PA		
Ambient temperature	—	-30...85 °C		
Productview	Page 516	Page 517		



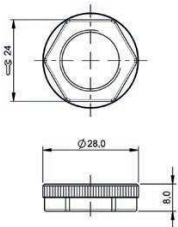
BAM009K



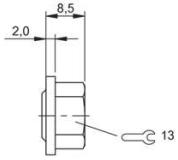
BAM01WR, BAM033A



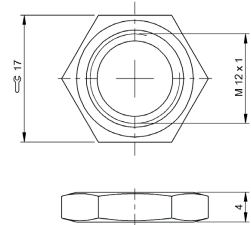
BAM01W6



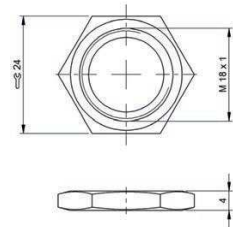
BAM01WL



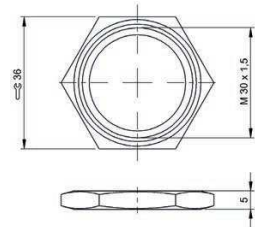
BAM01WF



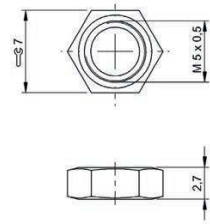
BAM01W3, BAM01WH



BAM01W4, BAM01WJ



BAM01W5, BAM01WK



BAM01WM

